

Coordinated Federal Action Plan to Reduce and Racial and Ethnic Asthma Disparities

**Philadelphia Summit on Pediatric Home
Asthma Interventions**

**Children's Hospital of Philadelphia
June 26, 2015**

**Peter J. Ashley, DrPH
HUD Office of Lead Hazard Control
and Healthy Homes**

May, 2012

www.epa.gov/childrenstaskforce

President's Task Force on Environmental Health Risks and Safety Risks to Children



Coordinated Federal Action Plan
to Reduce Racial and Ethnic
Asthma Disparities

Asthma Disparities Action Plan Received a High Level Launch (May 31, 2012)



President's Task Force on Environmental Health Risks and Safety Risks to Children

Organization:

- Cabinet level, inter-agency task force co-chaired by the EPA Administrator and DHHS Secretary

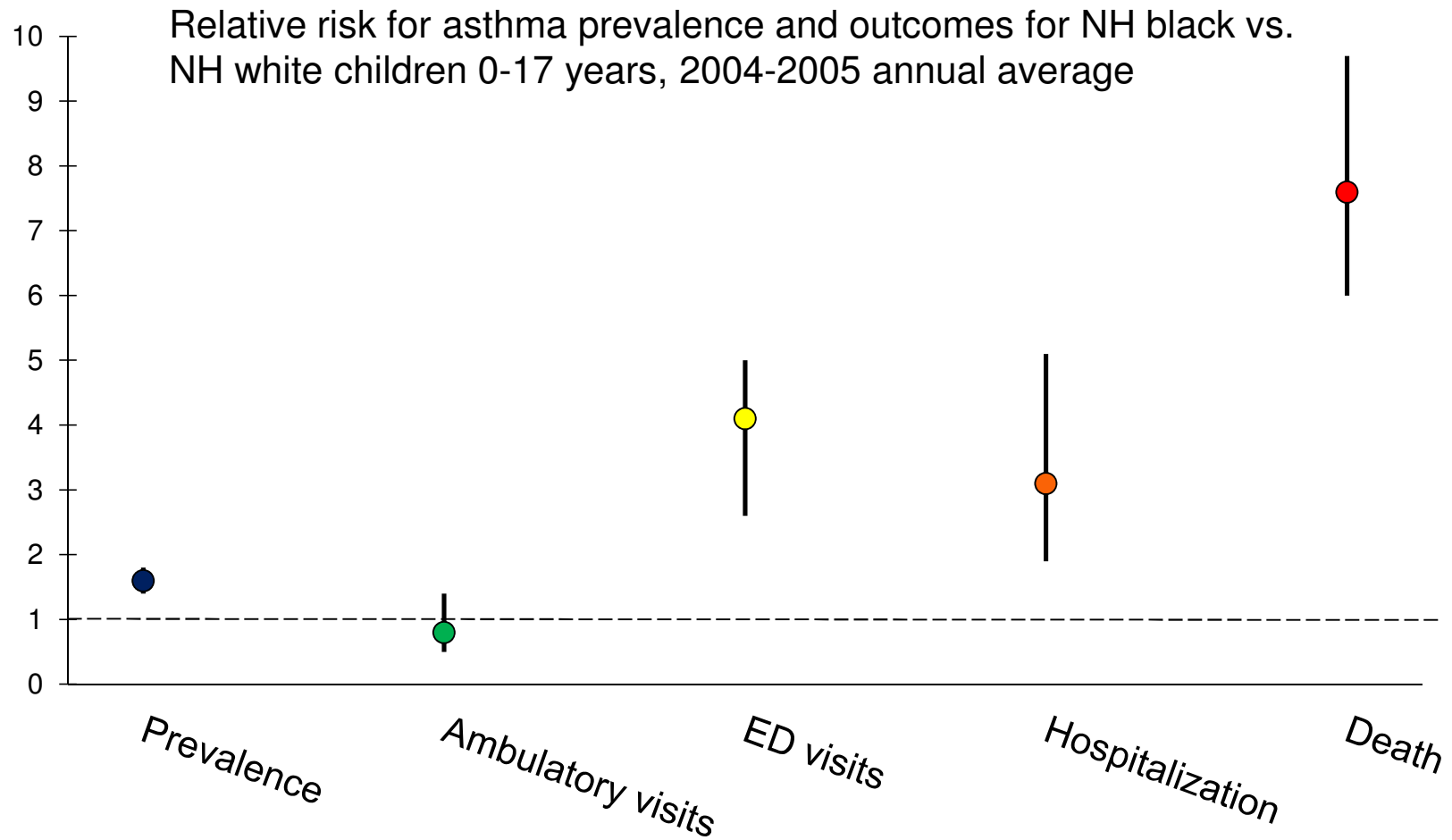
TF Mission:

- Identify priority issues of environmental health and safety risks to children that can best be addressed through interagency efforts
- Recommend and implement interagency actions
- Communicate to federal, state, and local decision makers information to protect children from risks

Priority Areas:

- Asthma Disparities
- Healthy Settings (e.g., healthy homes)
- Chemical Exposures
- Climate Change

Racial disparities across childhood asthma outcomes, children 0-17 years

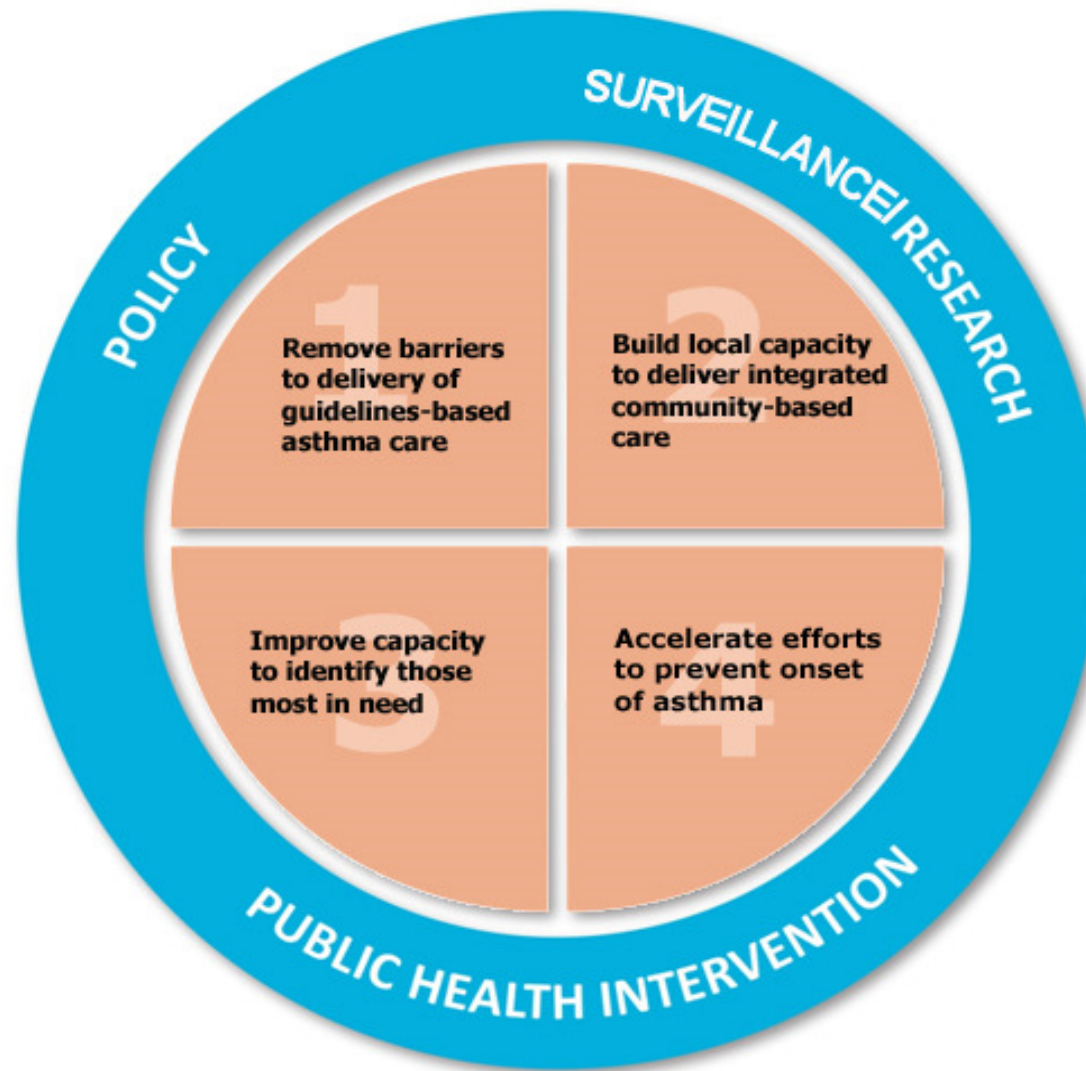


Focus of the Action Plan to Reduce Racial and Ethnic Asthma Disparities

The focus of the plan is on: *“preventable factors that contribute to disparities in the burden of asthma”*, including:

- Barriers to the implementation of guidelines-based asthma care:
 - Medical care factors
 - Physical and psychosocial environmental factors
- Lack of local capacity to deliver community-based, integrated, comprehensive asthma care
- Gaps in capacity to identify and reach children most at risk

Taking Action: Four Key Strategies



Strategy 1: Reduce barriers to the implementation of guidelines-based asthma management

Priority Actions:

- 1.1 Explore strategies to expand access to asthma care services
 - including: patient education, home interventions, medications, subspecialty services when needed
- 1.2 In health care settings, coordinate existing federal programs in underserved communities to improve the quality of asthma care
- 1.3 In homes, reduce environmental exposures
- 1.4 In schools and child care settings, implement asthma care services and reduce environmental exposures

Strategy 2: Enhance local capacity to deliver integrated, comprehensive care

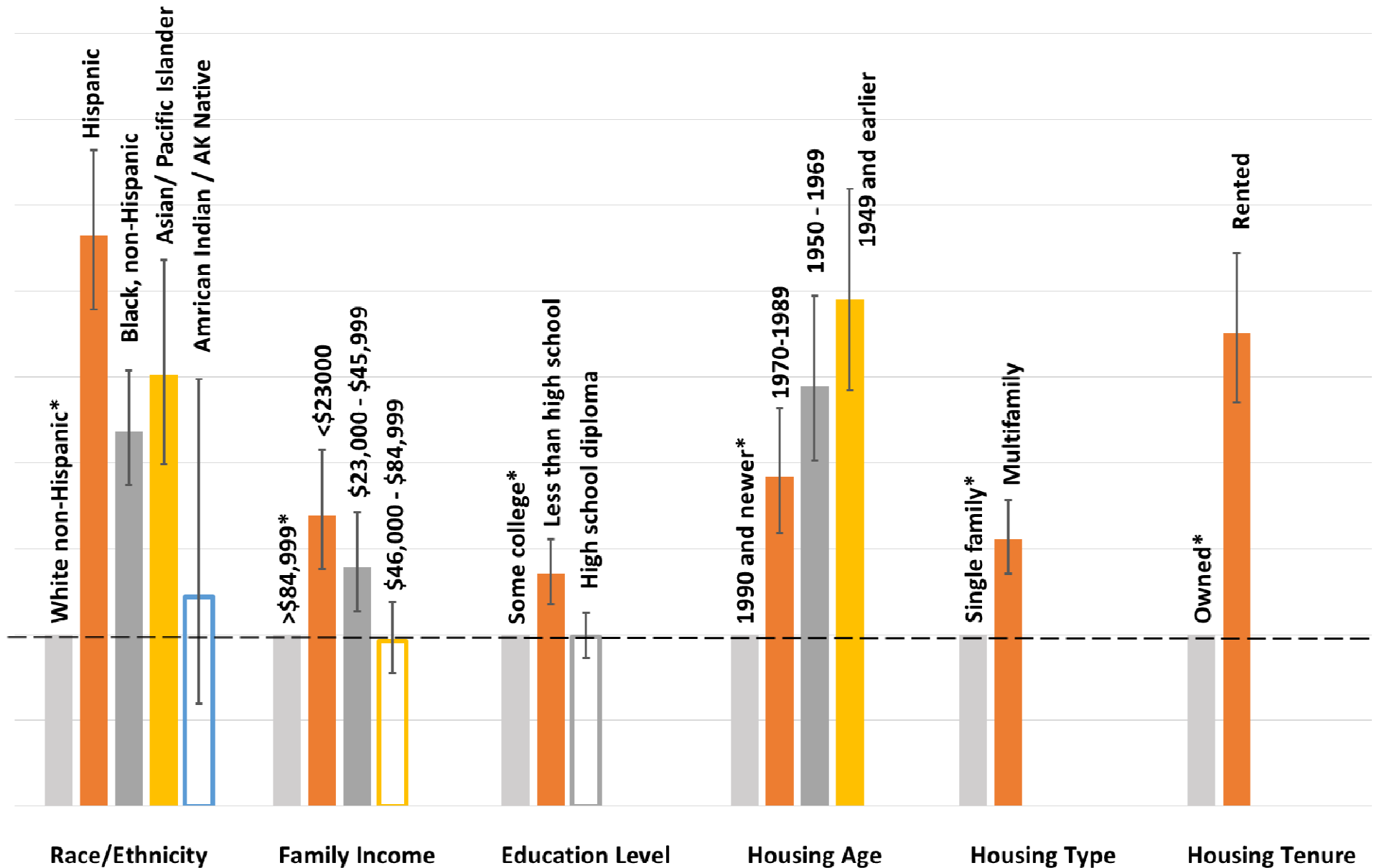
Priority Actions:

- 2.1 Promote cross-sector partnerships among federally supported, community-based programs targeting children with a high burden of asthma.
 - (e.g., tobacco control, obesity prevention, radon, healthy homes, weatherization, lead hazard control)
- 2.3 Conduct research to evaluate models of partnerships that empower communities to identify and target disparate populations and provide comprehensive, integrated care at the community level.

Some ADAP Commitments from Principals' Meeting (5/6/15) (Draft)

- CDC: Supports state asthma programs to coordinate asthma control services with Medicaid, healthcare systems, and community-based programs.
- EPA: Continue efforts to establish sustainable funding for in-home asthma interventions.
- HUD: Promote greater adoption of integrated pest management in low income multifamily housing.
- National Heart Lung and Blood Institute: Conduct Evidence Review for 6 priority topics for potential update of NAEPP's Expert Panel Report-3 (2007): Guidelines for the Diagnosis and Management of Asthma.

Odds Ratios for Cockroaches Seen Daily or Weekly by Demographic and Housing Characteristics (2011 American Housing Survey)



Core ADAP Implementation Team

- Peter Ashley, HUD OLHCHH
- ***Brenda Doroski**, EPA Office of Air and Radiation
- ***Michelle Freemer**, National Heart Lung and Blood Institute (NHLBI)
- Paul Garbe, CDC National Center for Environmental Health
- Rachael Tracy, NHLBI

*Co-chairs

Thank you!

The Federal Action Plan to Reduce Asthma Disparities is available at:

www.epa.gov/childrenstaskforce

Peter.J.Ashley@hud.gov