

Readiness for Change in Colorado

Dr. Larry Work

Executive Director and Chief Medical Officer
Colorado Department of Public Health and
Environment



COLORADO
Department of Public
Health & Environment

What does CDPHE bring to the
dialogue on in-home
environmental assessments?

Social Determinants of Health

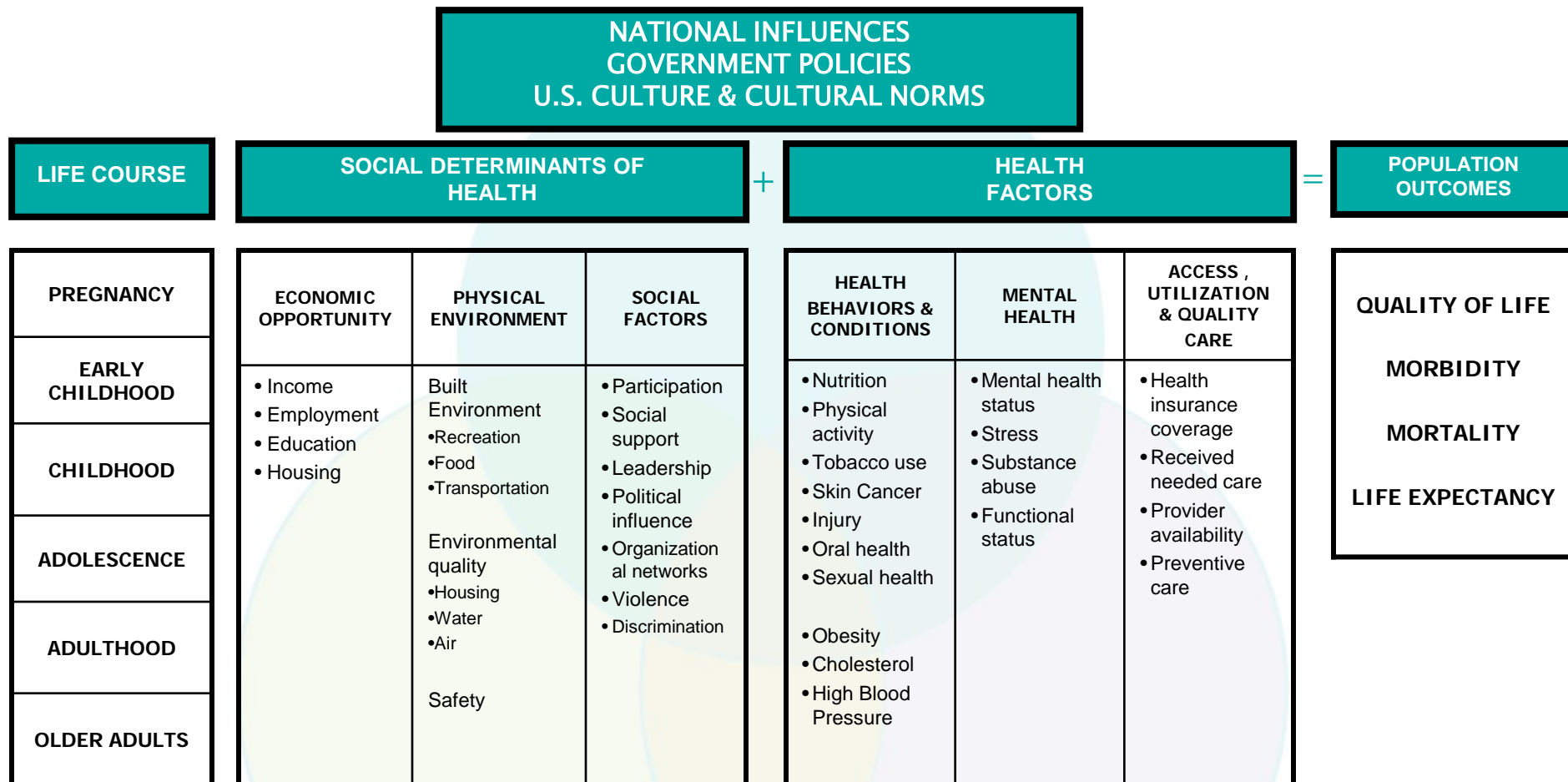
The most significant impacts on health are socioeconomic factors.

Health Equity can be achieved by addressing the social determinants of health and changing the context in which people live, learn, work and play.

Advancing strategies on reimbursements for pediatric asthma assessments and interventions is important to health equity and to reducing costs and suffering due to asthma.

Health Equity

An Explanatory Model for Conceptualizing the Social Determinants of Health

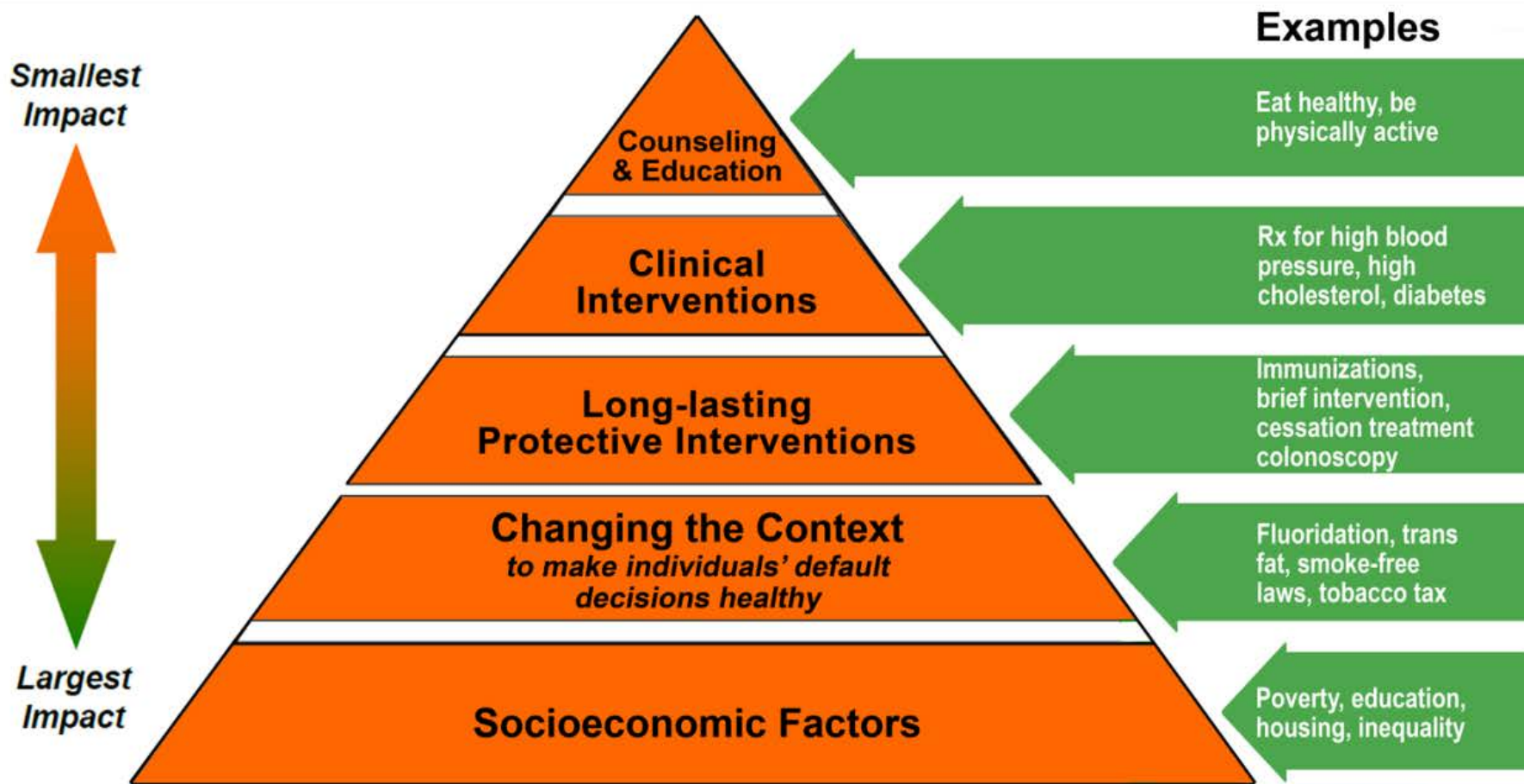


Public Health's Role in Addressing the Social Determinants of Health

- Advocating for and defining public policy to achieve health equity
- Coordinated interagency efforts
- Creating organizational environments that enable change
- Data collection, monitoring and surveillance
- Population based interventions to address health factors
- Community engagement and capacity building

CDC Health Impact Pyramid

Factors that Affect Health



Check the Tarrant County Public Health Web site to learn more.

<http://health.tarrantcounty.com>



Leadership and Partnership

CDPHE and our local public health partners align with sister agency efforts, including DHS and HCPF to implement the Affordable Care Act:

- provide education,***
- promote enrollment, and***
- improve population health and service delivery***

Expertise and Information

- *Models to ensure the entities identified to conduct assessments are skilled, trained and/or certified.*
- *Effective and efficient use of health data and technology, specifically:*
 - *Child Health Survey - Subset of the Behavioral Risk Factor Surveillance System*
 - *Hospital Discharge Data*
 - *Tobacco Attitudes and Behavior Survey*
 - *Environmental and Public Health Tracking System*
 - *HIE's, including QHN and CORHIO*

Childhood Asthma in Colorado

Alison Grace Bui M.P.H.



COLORADO
Department of Public
Health & Environment

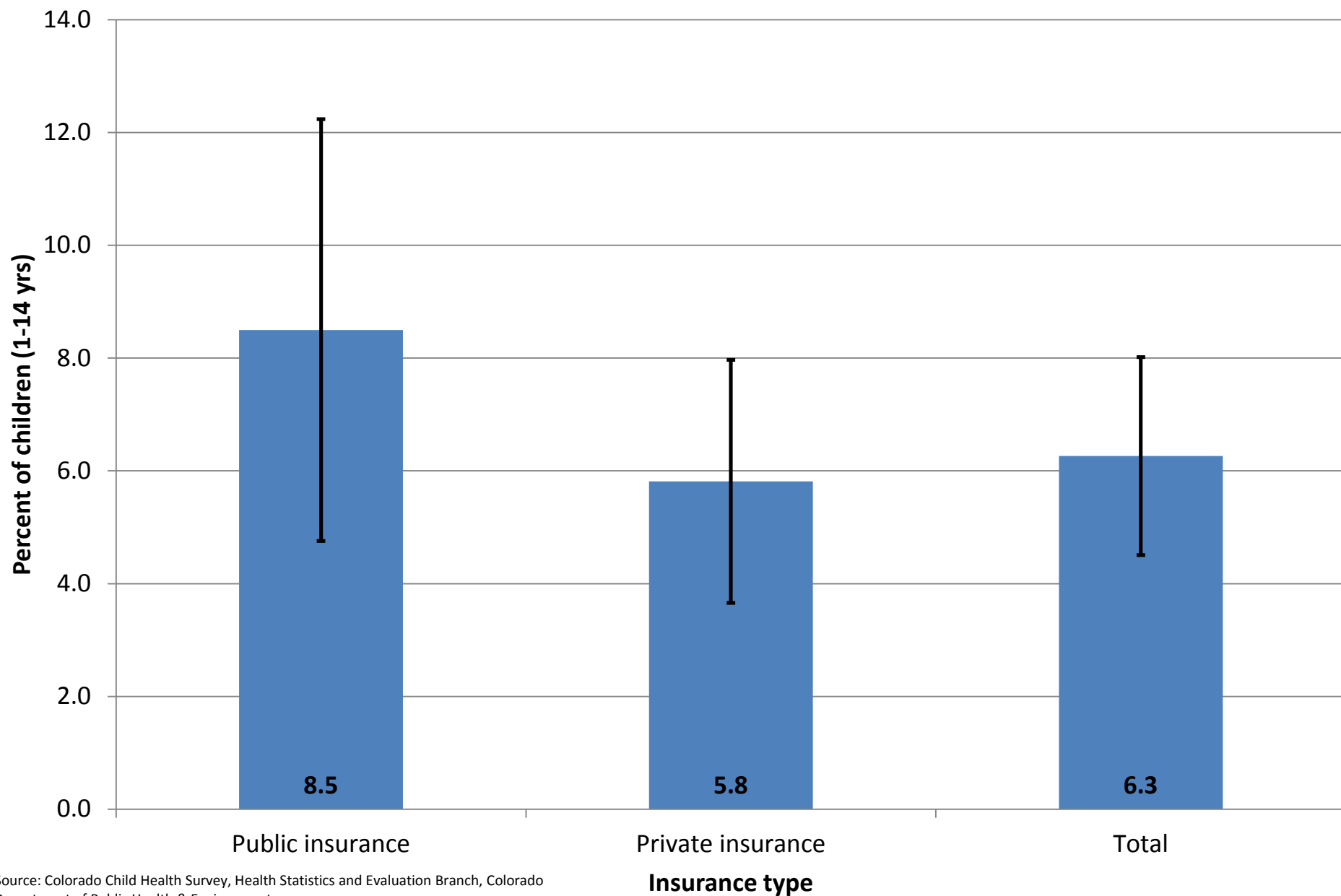
Child Asthma Data

- Colorado Child Health Survey
 - Call back of Adult BRFSS
- Colorado Hospital Association
 - Hospital Discharge Dataset
 - Hospital Emergency Department Dataset

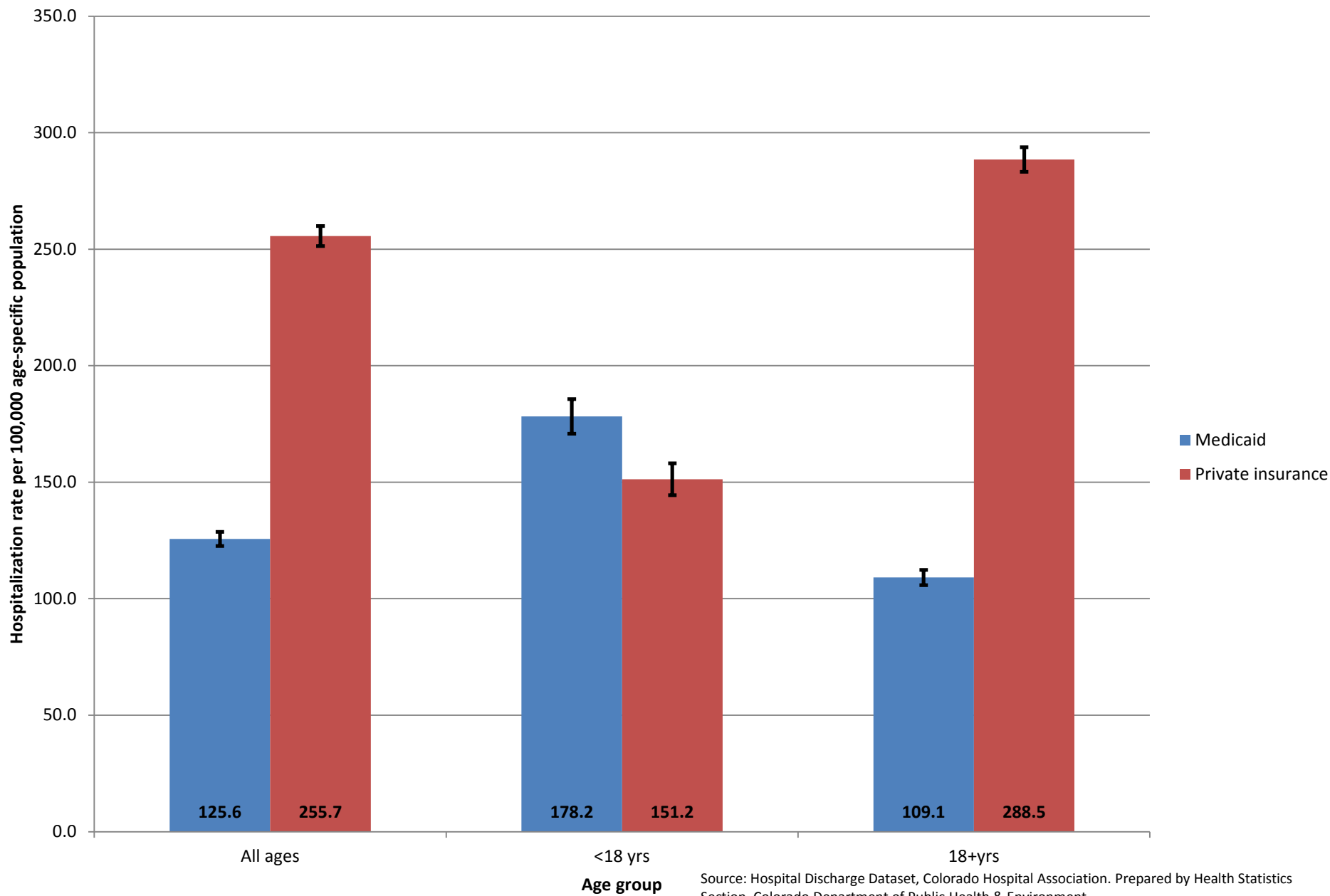


COLORADO
Department of Public
Health & Environment

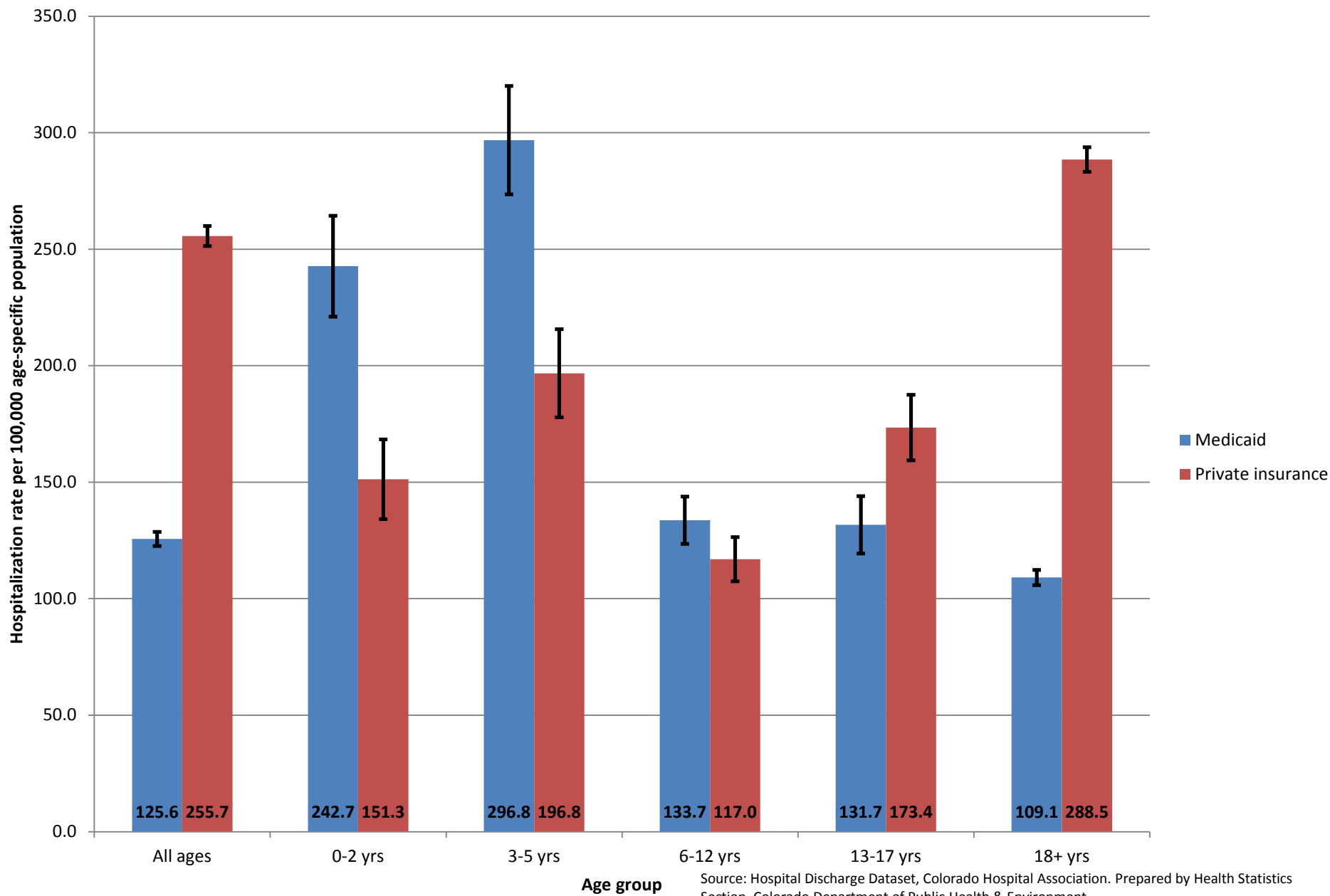
Percent of Colorado children with current asthma by insurance type (2011-2012)



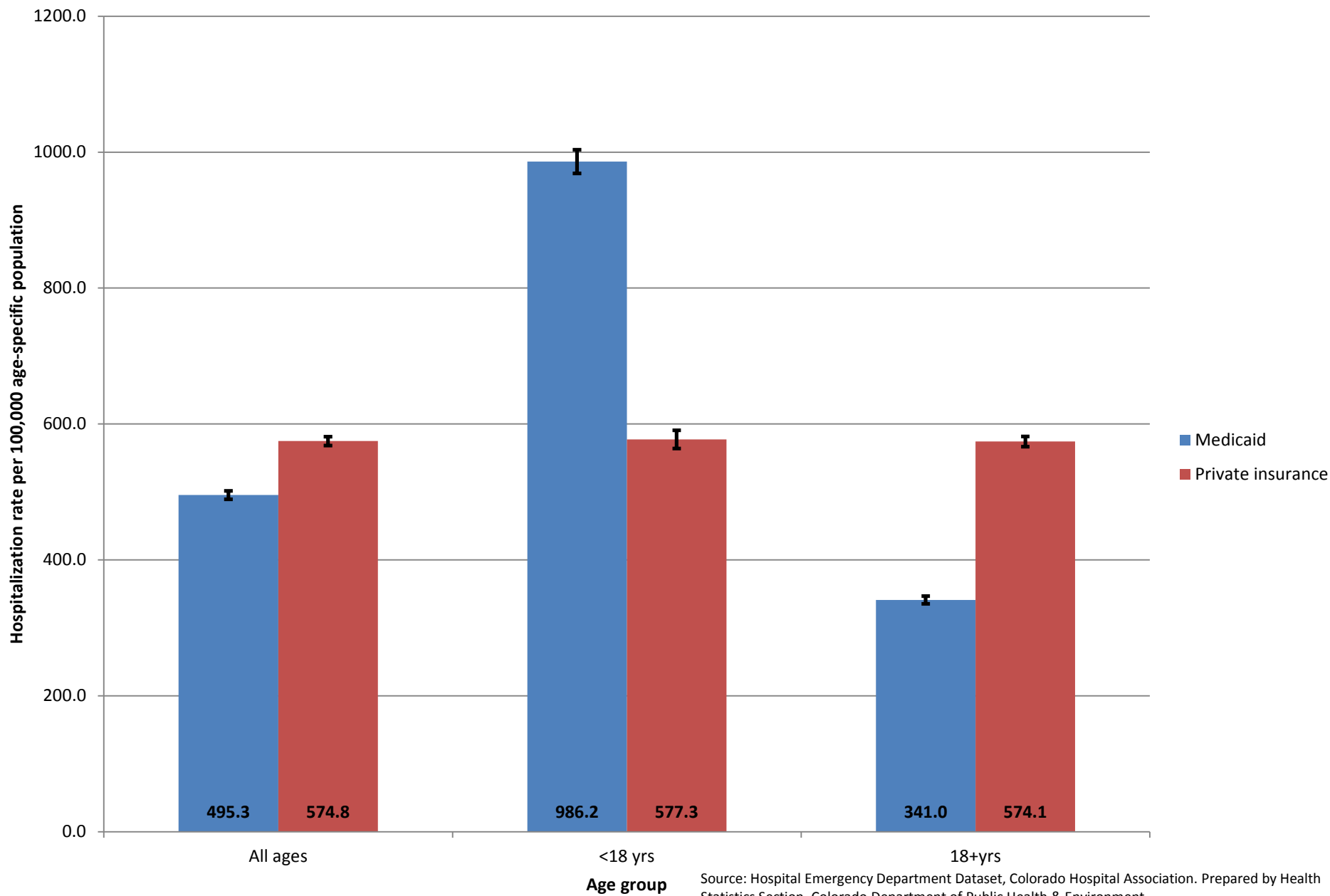
Asthma-related inpatient hospitalization rates by age group and expected payer source (2012)



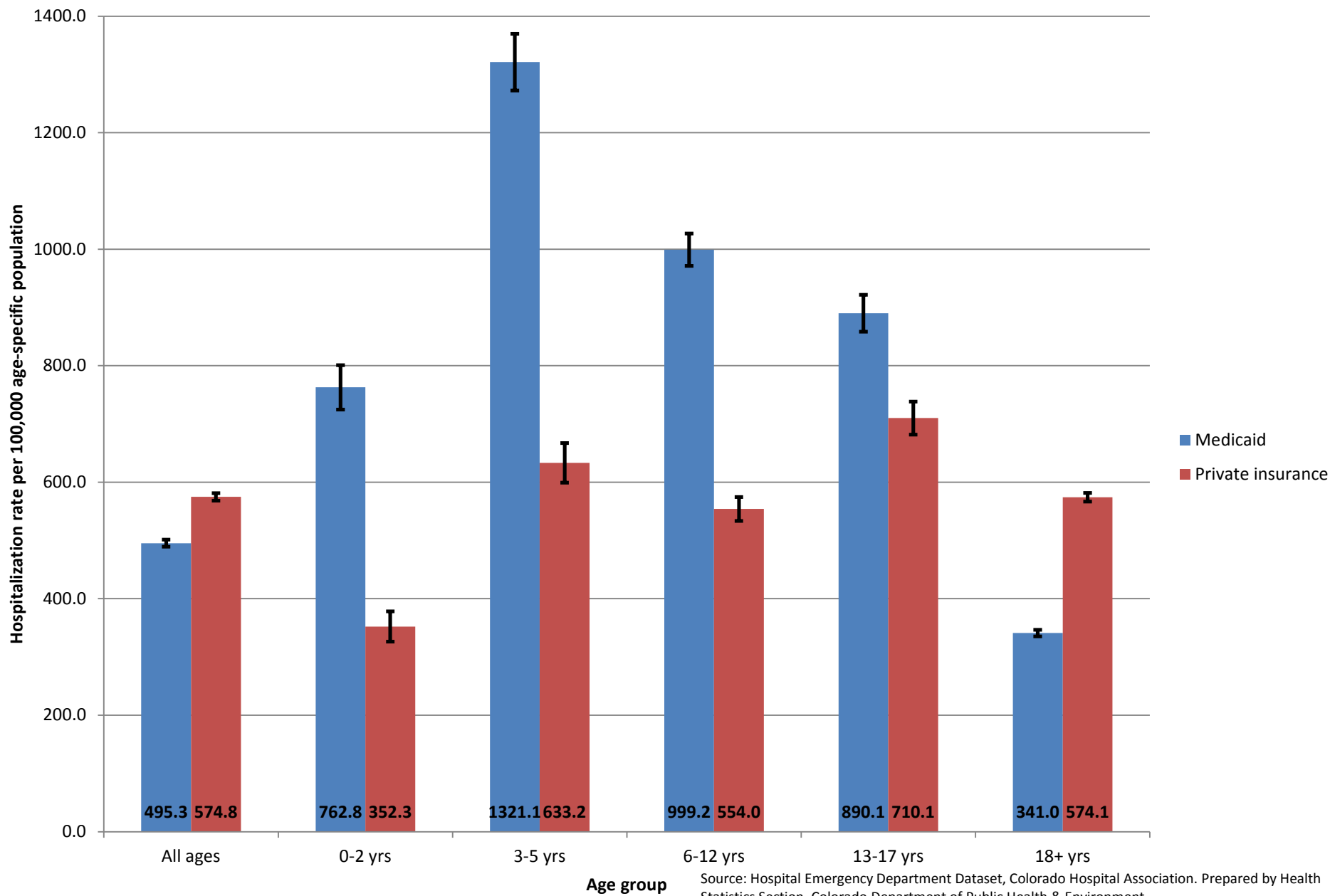
Asthma-related inpatient hospitalization rates by age group and expected payer source (2012)



Asthma-related emergency department hospitalization rates by age group and expected payer source (2012)



Asthma-related emergency department hospitalization rates by age group and expected payer source (2012)

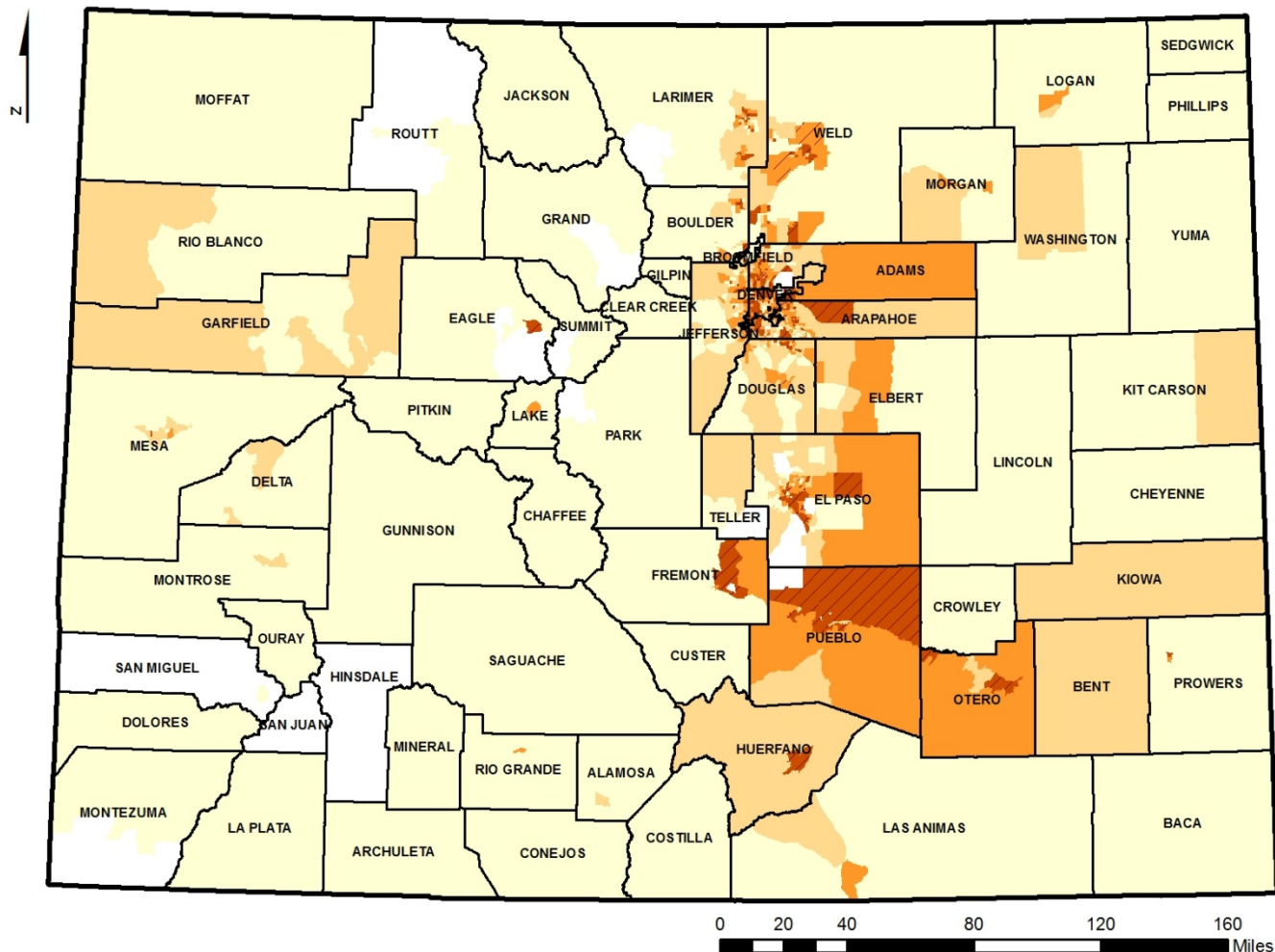


Source: Hospital Emergency Department Dataset, Colorado Hospital Association. Prepared by Health Statistics Section, Colorado Department of Public Health & Environment

Asthma Hospital Discharges and Inpatient Hospitalizations, Age-Adjusted Rate by Census Tract, 2007-2011



Colorado Department
of Public Health
and Environment



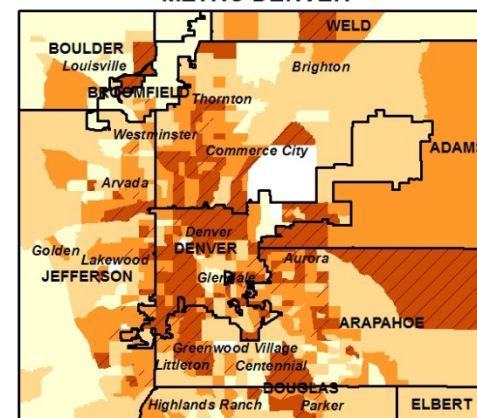
Age-Adjusted Rate of Hospitalizations
per 100,000 persons

- Lowest Quartile (9.8 - 428.1)
- Second Quartile (428.2 - 625.0)
- Third Quartile (625.1 - 831.5)
- Highest Quartile (831.6 - 3503.2)

State Average 637.6 (95% C.I.: 634.4 - 640.8)

Statistically Higher than Average

METRO DENVER



Event/numerator data:
Hospital Discharge Dataset, Colorado Hospital Association.

Population/denominator data:
2007-2011 Five-Year Estimate, American Community Survey, US Census