

Genesee County Asthma Network (GCAN)

**Controlling Asthma in
Genesee County, Michigan**

Jan Roberts RN BSN AE-C

GCAN – Scope of Program

Location: Flint, MI

Type: Community Coalition

Service Area: Genesee County and surrounding areas; City of Flint

Population Served: 10,854 children and 30,156 adults with asthma

Key Players: American Lung Association (ALA), a network of 81 churches focused on community health, several local universities, Genesee County Medical Society Environmental Committee, Public Health Department and the local tobacco coalition

Results: In first year, hospital savings of \$660,000, 45% decrease in emergency department (ED) visits over two years, 25% decrease in hospitalizations and decreased missed school days.

GCAN – Scope of Program

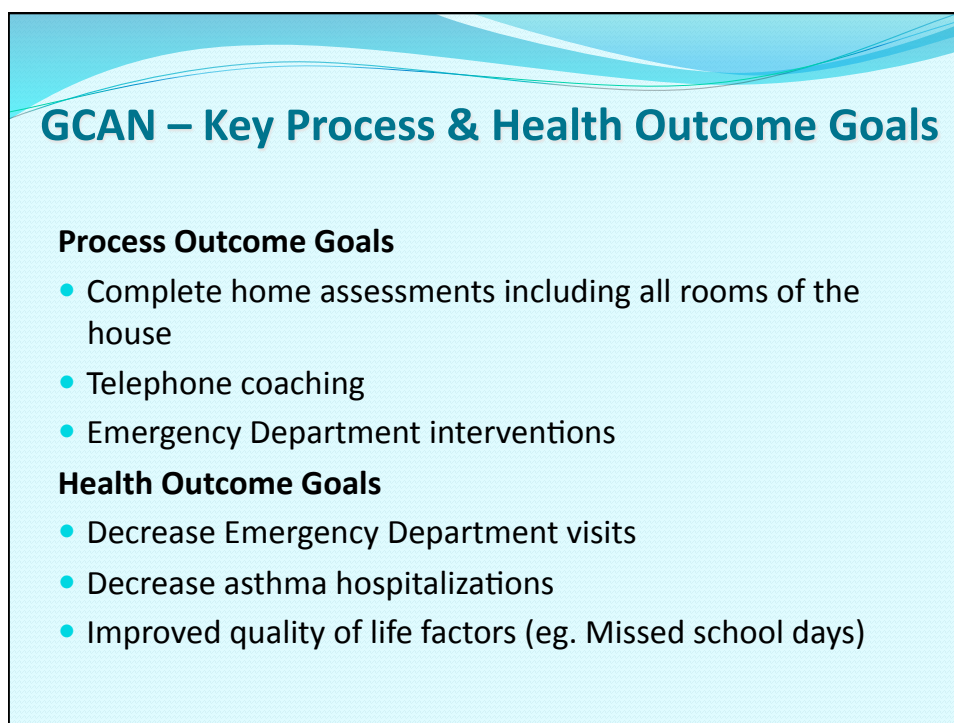
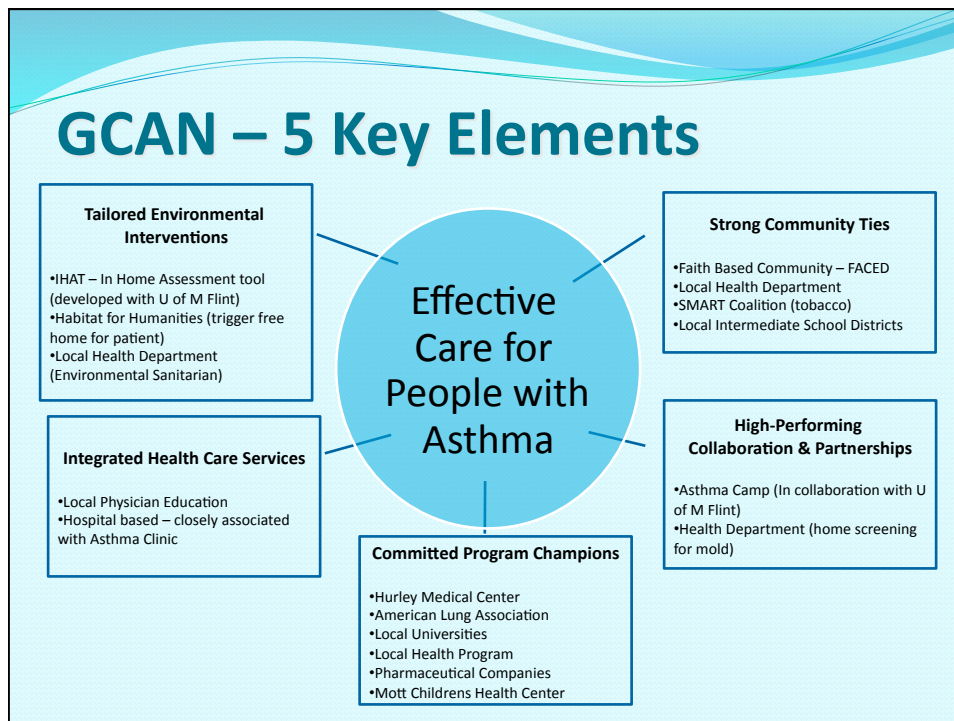
Serves both adult and child with focus on inter-city children in Genessee county and surrounding area's

Number of Patients Served

- **150-200 patients served per year through the disease management**
- **Approx. 2000 people served through health fairs, school and church education and presentations/year**

GCAN – Asthma Camp





GCAN – Key Health Outcomes

In 1st year had \$660,000 in cost savings

- ED visits ↓ 45%
- Hospitalizations ↓ 25%
- Intensive Care ↓ 18%

For 2006 – 2008

- ED visits from 516 --> 61
- Hospital stays from 283 --> 42
- IHAT ↓ 55% in second hand smoke for those who received in home asthma education

GCAN – Financing

- **Hurley Medical Center is our primary funding source with in-kind funds**
- **Secondary funding sources are Federal, State and Local Grants**
- **Funding Issues:**
 - Working with Hurley Medical Center as a fiduciary has enabled us to develop our programs goals and initiatives
 - Because we are not our own 501-C3 limits our ability to get grant funding and other sustainable funding
- **Proposed Solution:**
 - Seeking health plan reimbursement and other sustainable sources of funding

GCAN – On the Horizon

- The causes and impacts of asthma are identified and managed in our community.
- To continue to improve the quality of life with asthma and their families through research, education, advocacy and community partnership
 - Funding will be actively sought to maintain stability and sustainability

GCAN - Summary

Asthma management is effectively facilitated with expertise from diversified community partners.

Genessee County Asthma Network (GCAN)
1125 S Linden Rd Ste. 300, Flint, MI 48532
Phone: (810) 257 – 9591 Fax: (810) 760-0441