



Communities in Action



NATIONAL ASTHMA FORUM

WASHINGTON, DC JUNE 9-10, 2011

Creating a Common Language – Using Data Collection to Effectively Collaborate

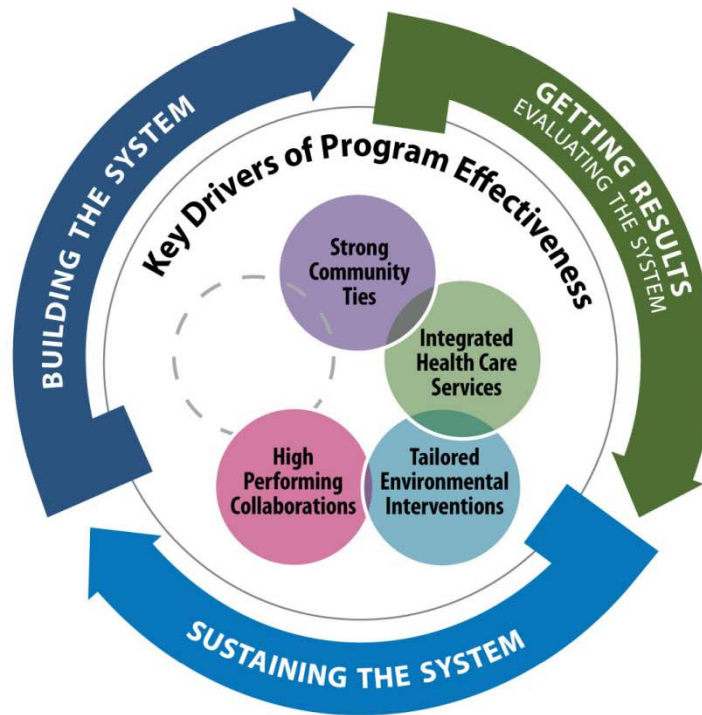
Questions to Run On

What are the partnerships and collaborations these programs are using data to generate?

What partnerships are they using to generate the data?

What new conversations are these programs convening with this data?

Committed Leaders and Champions

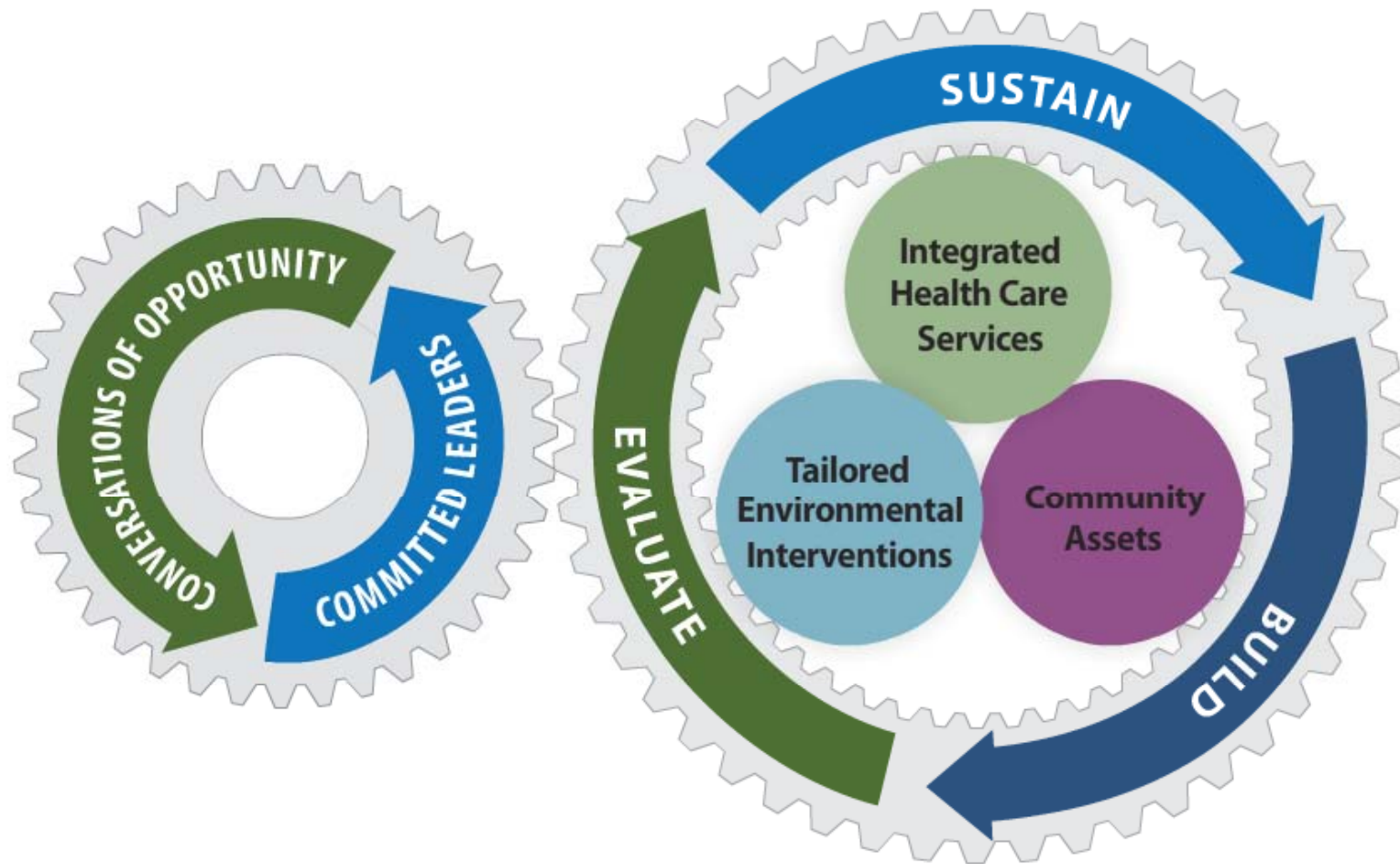


**Committed
Leaders &
Champions**

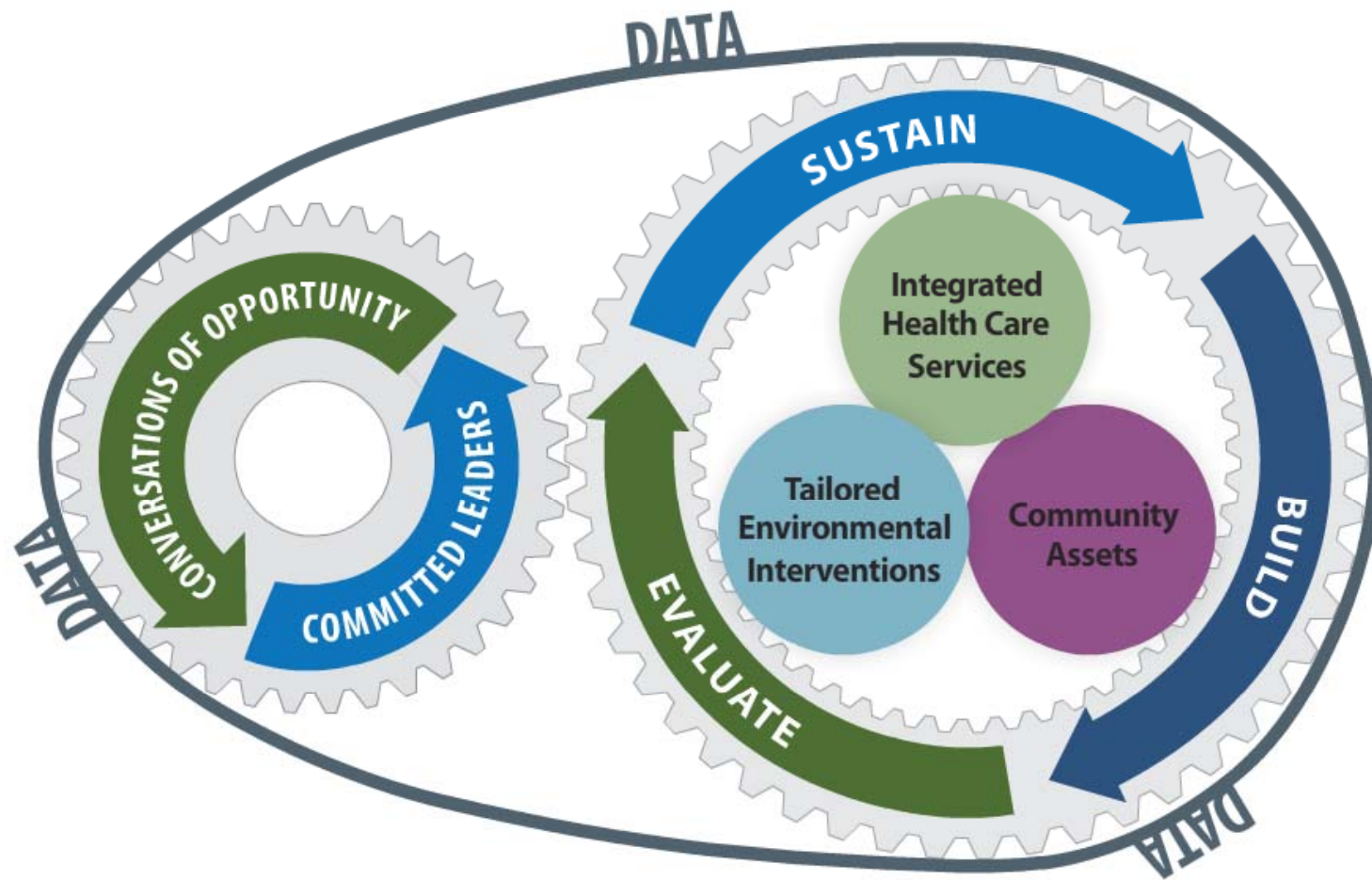
Convening Committed Leaders and Champions



Connecting to the *System*



Connecting to the *System*



Question: For your program, rate the strength of your efforts to have Committed Leaders and Program Champions?

- 1. No significant effort**
- 2. Small effort**
- 3. Moderate effort**
- 4. Significant, growing**
- 5. Large scale, aggressive, well funded**

***Question:* What do you do with the data you collect?**

- 1. Report to funders**
- 2. Improve services and care**
- 3. Communicate with your target population**
- 4. Identify areas for program improvement**

Panelists

Steven Conti, *Seton Asthma Center*

Elizabeth Klements, *Children's Hospital Boston*

Patricia Peretz, *WIN for Asthma*

Dr. Megan Sandel, *Boston Medical Center*

Table Discussion

What are some effective ways you collect and share data?

What barriers have you faced when collecting and sharing data? What solutions have you found?

Identify 1-2 questions to pose to the panel