



MO HealthNet Health Homes

Childhood Asthma



What is a Health Home?

The Affordable Care Act

- Section 2703 of the Affordable Care Act **allows states to amend their Medicaid state plans** to provide **Health Homes** for enrollees with chronic conditions.
- “**Eligible individual with chronic conditions**’ means an individual who is eligible for medical assistance...and has at least 2 chronic conditions; 1 chronic condition and is at risk of a second chronic condition; or 1 serious and persistent mental health condition.”
- Provides an **enhanced 90:10 match rate** for 8 fiscal year quarters



Missouri's Health Homes

Missouri has two types of Health Homes:

- CMHC Healthcare Homes (28)
- Primary Care Health Homes (24)
 - 18 Federally Qualified Health Centers (FQHCs)
 - 6 Public/Private Hospitals





Primary Care Health Home Qualifying Conditions

- Combination of Two
 - Diabetes (CMS approved to stand alone as one chronic disease and risk for second)
 - Heart Disease, including hypertension, dyslipidemia, and CHF
- **Asthma**
- BMI above 25 (overweight and obesity)
- Tobacco Use
- Developmental Disabilities



CMHC Health Home Qualifying Conditions

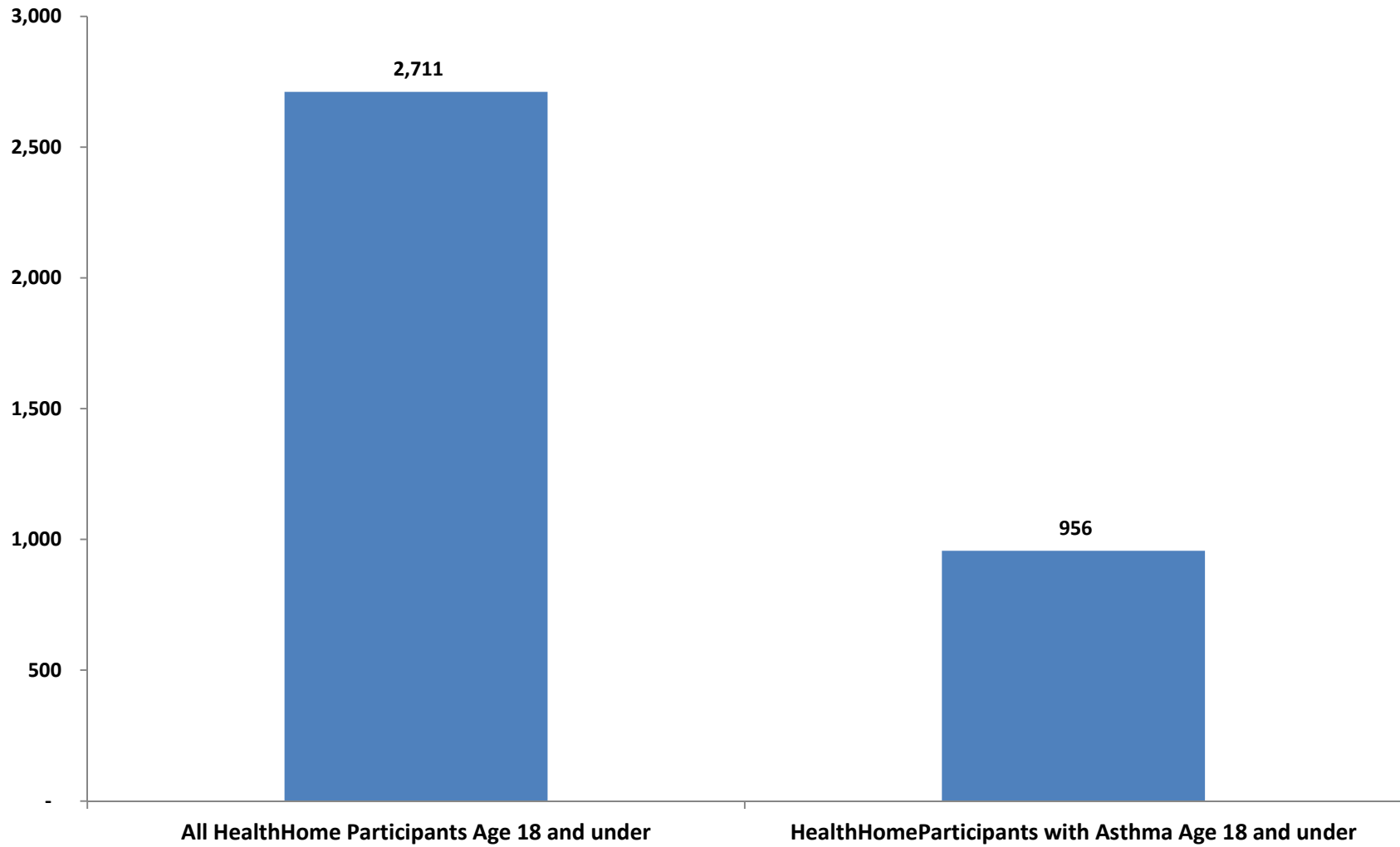
- One of the following three conditions (identified by patient health history):
 1. A serious and persistent mental illness
 - CPR eligible adults, and kids with SED
 2. A mental health condition and substance use disorder
 3. A mental health condition and/or substance use disorder and one other chronic health condition (same conditions as for primary care)



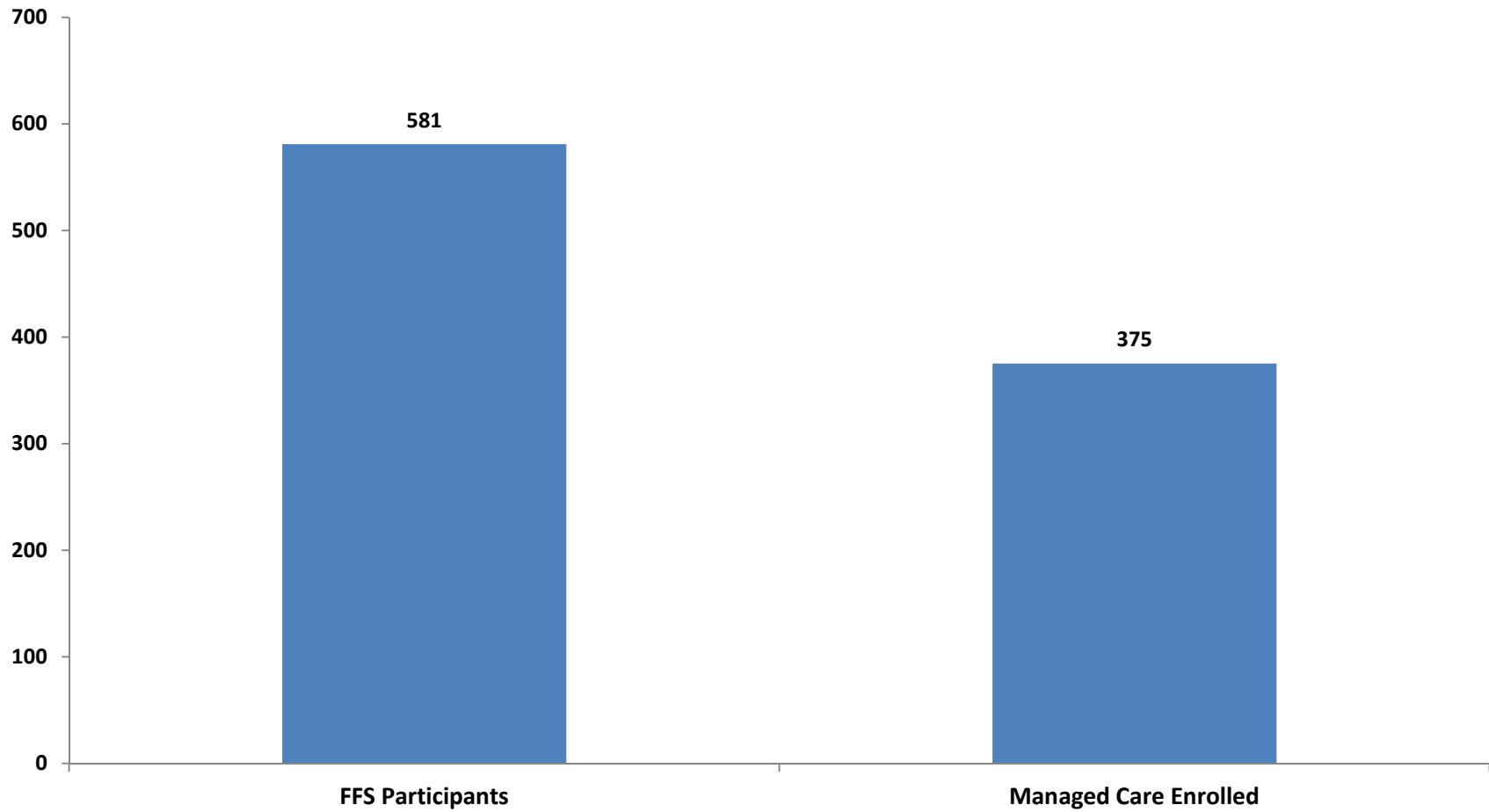
Health Home Services ("Touches")

- Comprehensive care management
- Care coordination
- Health promotion
- Comprehensive transitional care including follow-up from inpatient and other settings
- Patient and family support
- Referral to community and support services

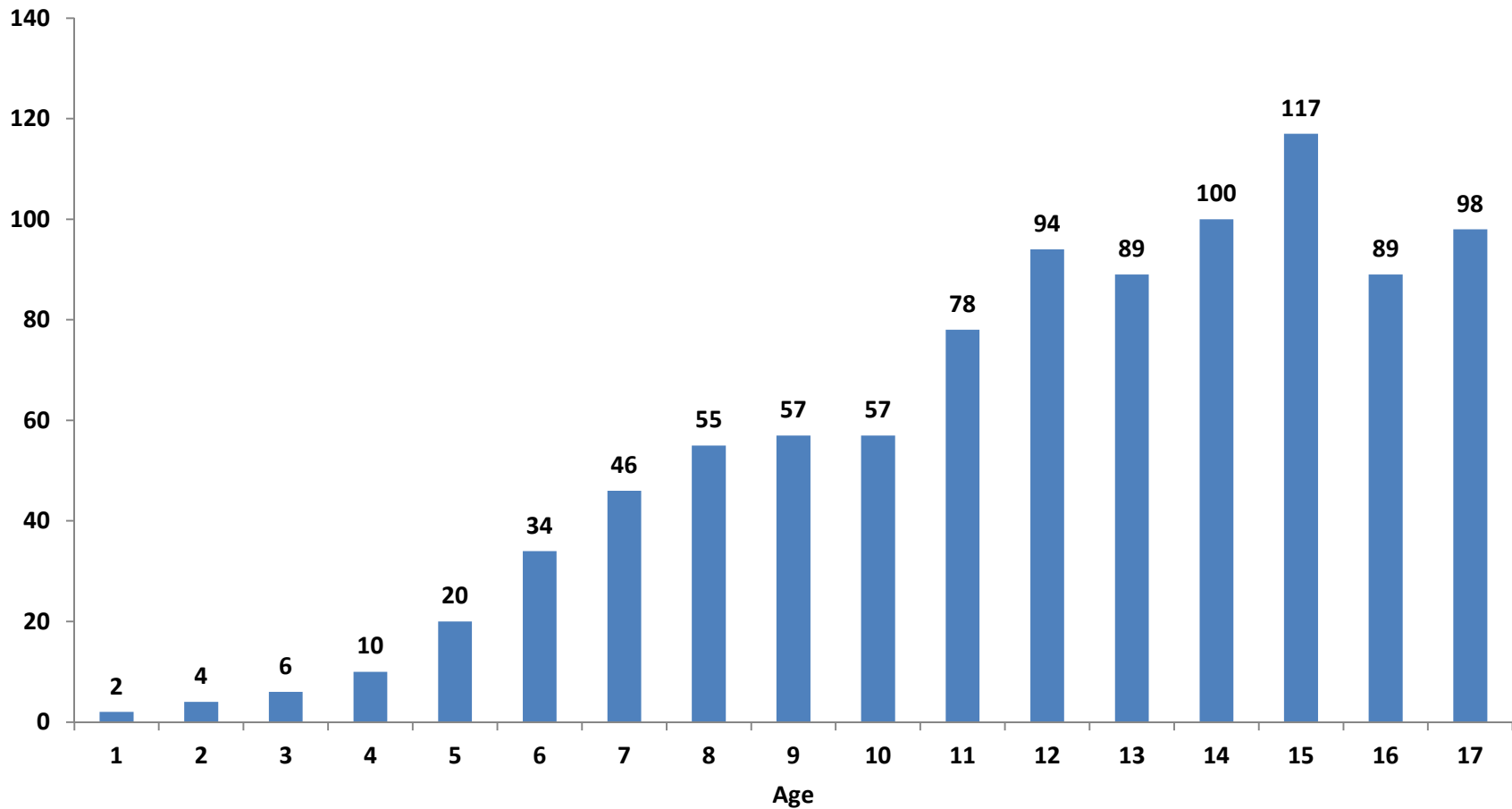
Health Home Asthma Prevalence



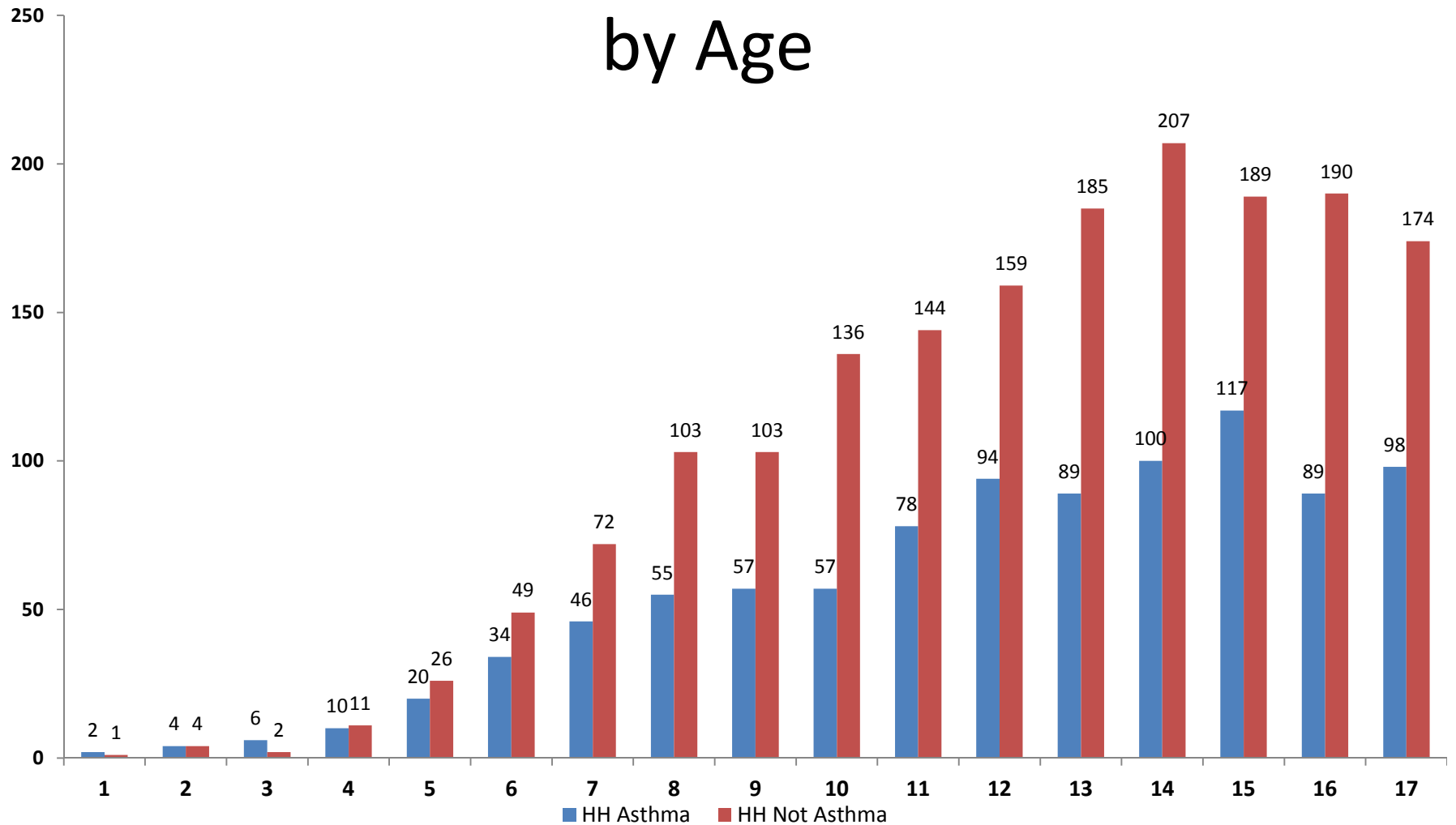
Children Enrolled in Missouri Health Home FFS and Managed Care



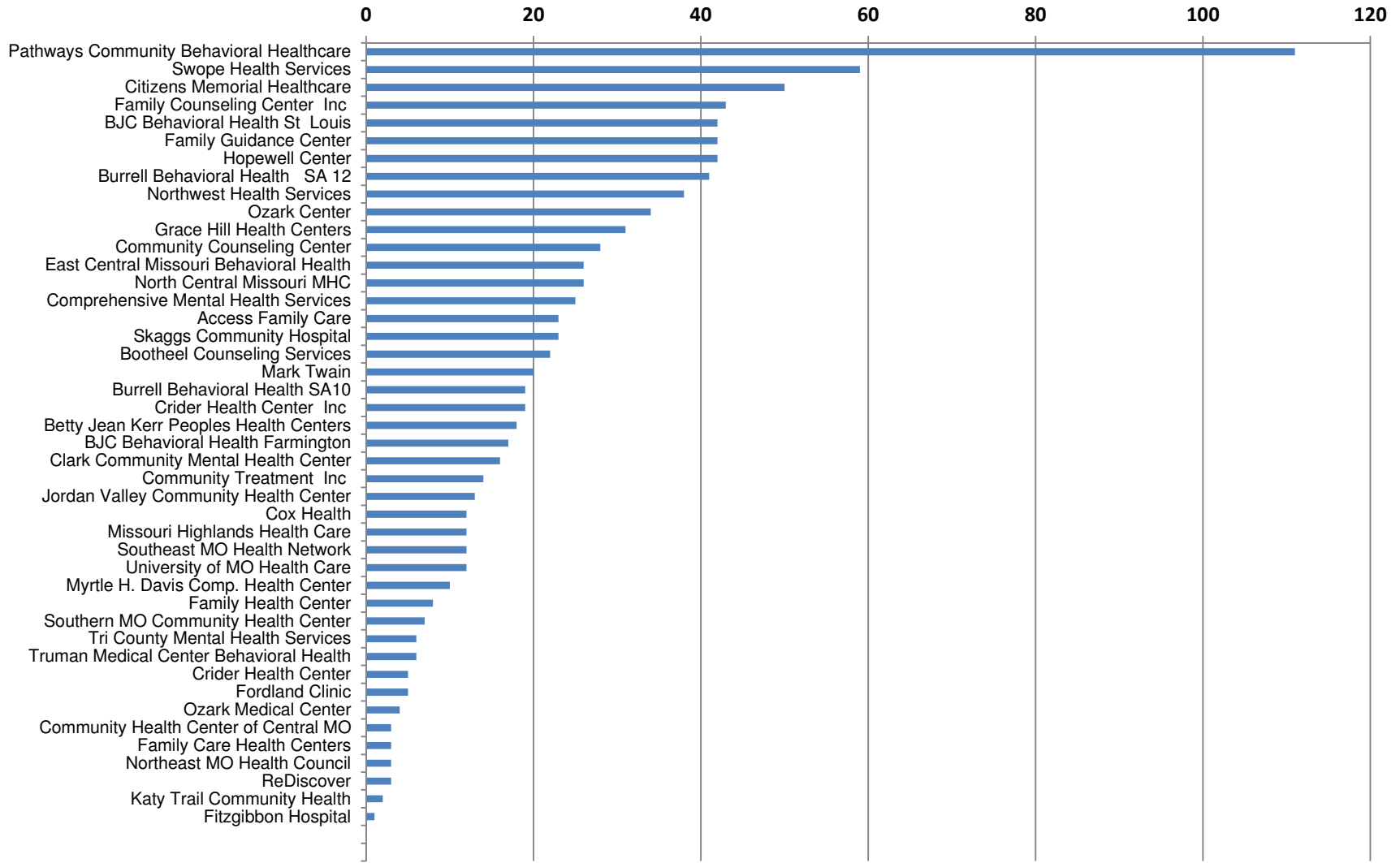
Children with Asthma Enrolled in Missouri Health Home - by Age



Comparison of Children Enrolled in Health Home – with and without Asthma by Age

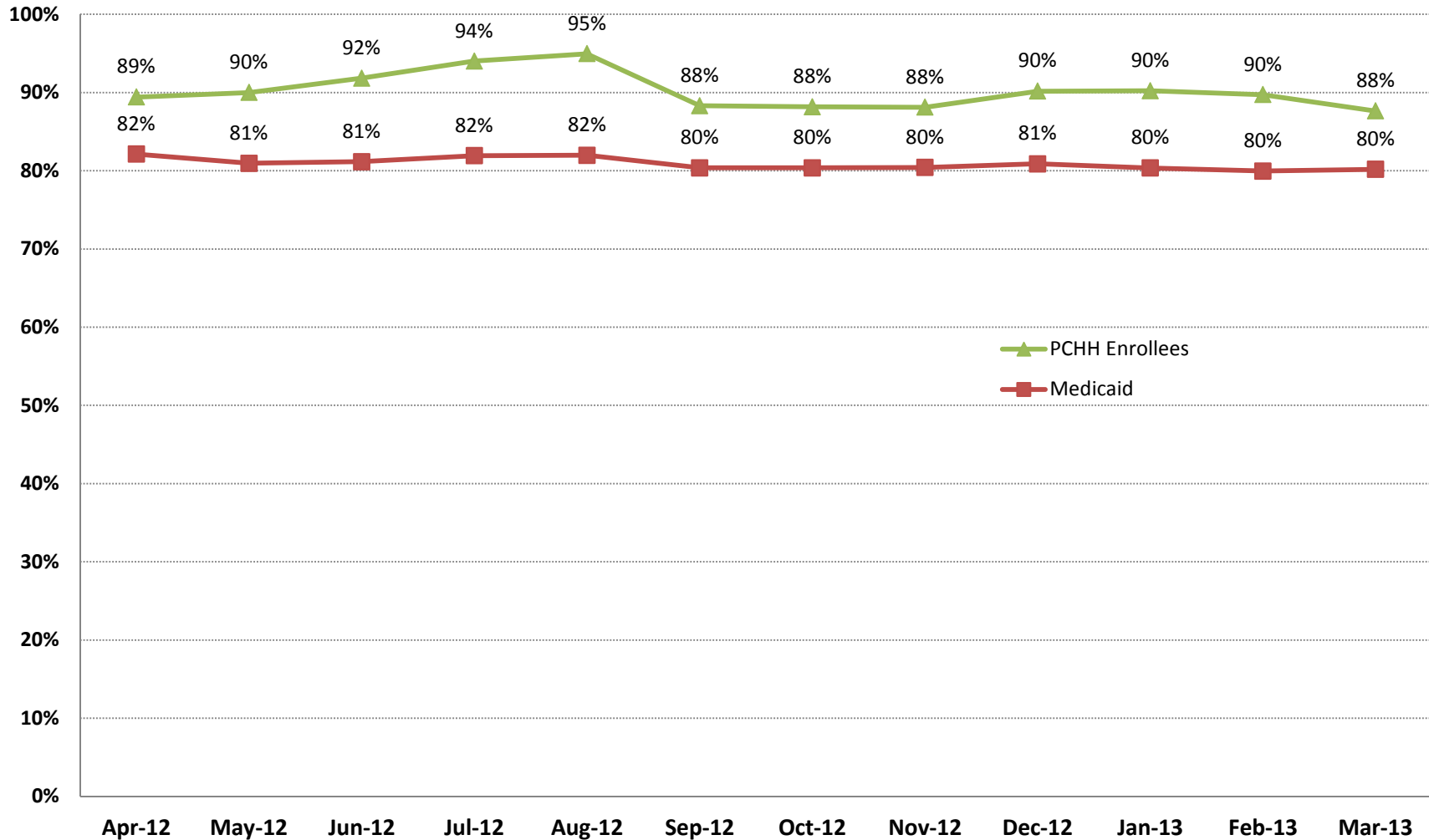


Children with Asthma Enrolled in Missouri Health Home by Provider

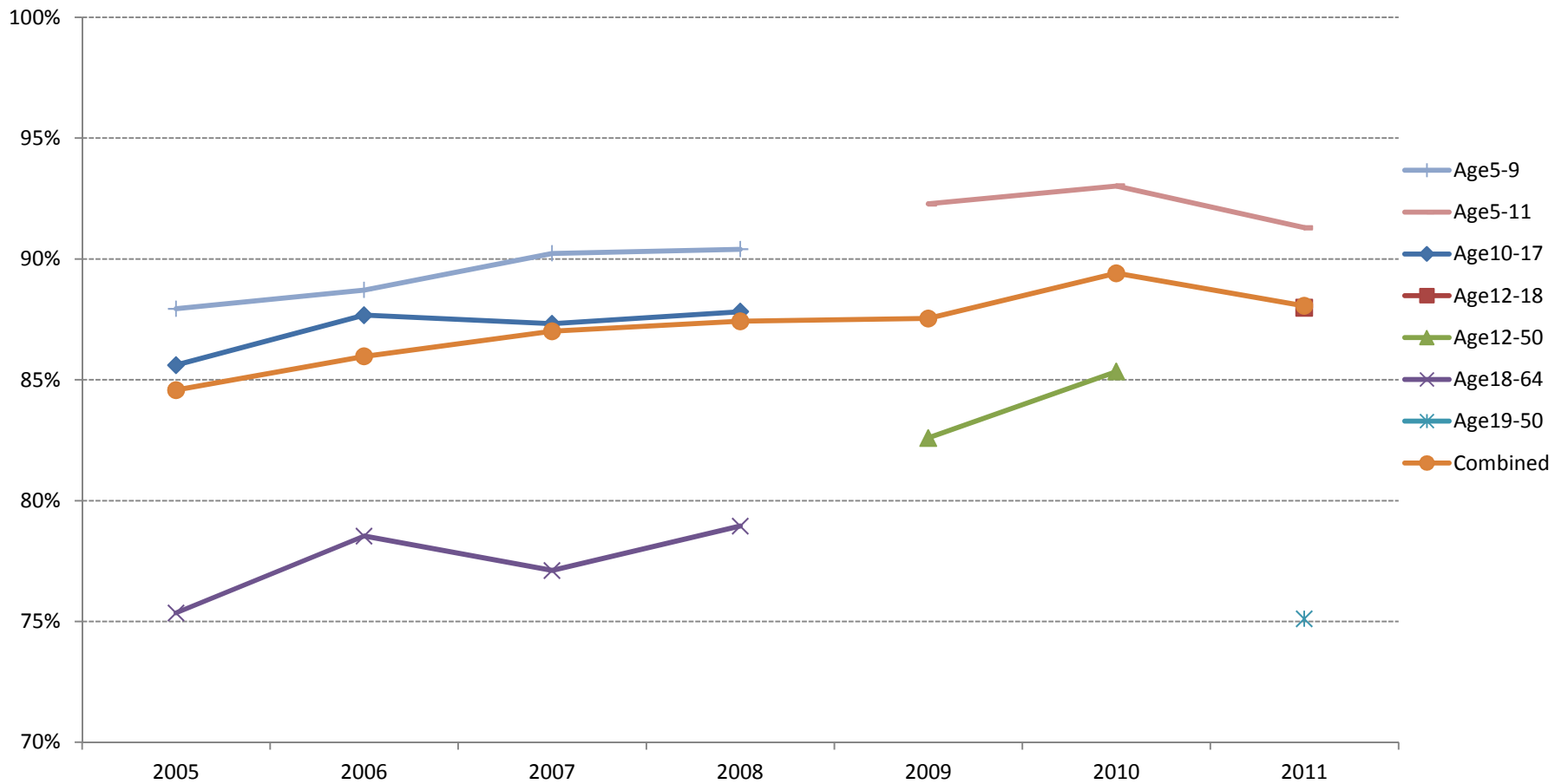


Children with Asthma Enrolled in Missouri Health Home

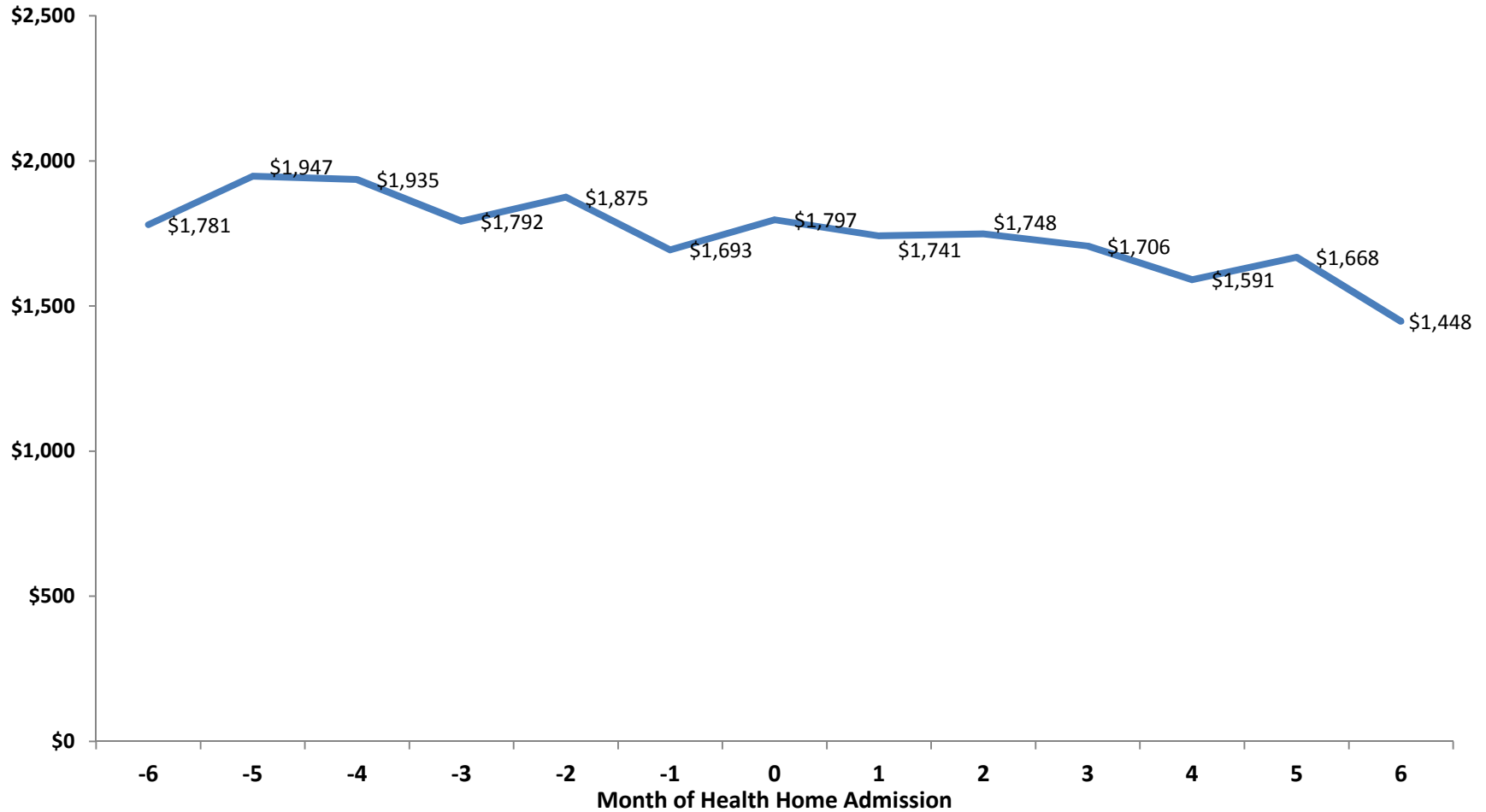
Pediatric Asthma Controller Medication



Mo HealthNet Managed Care HEDIS – Asthma Controller Medication

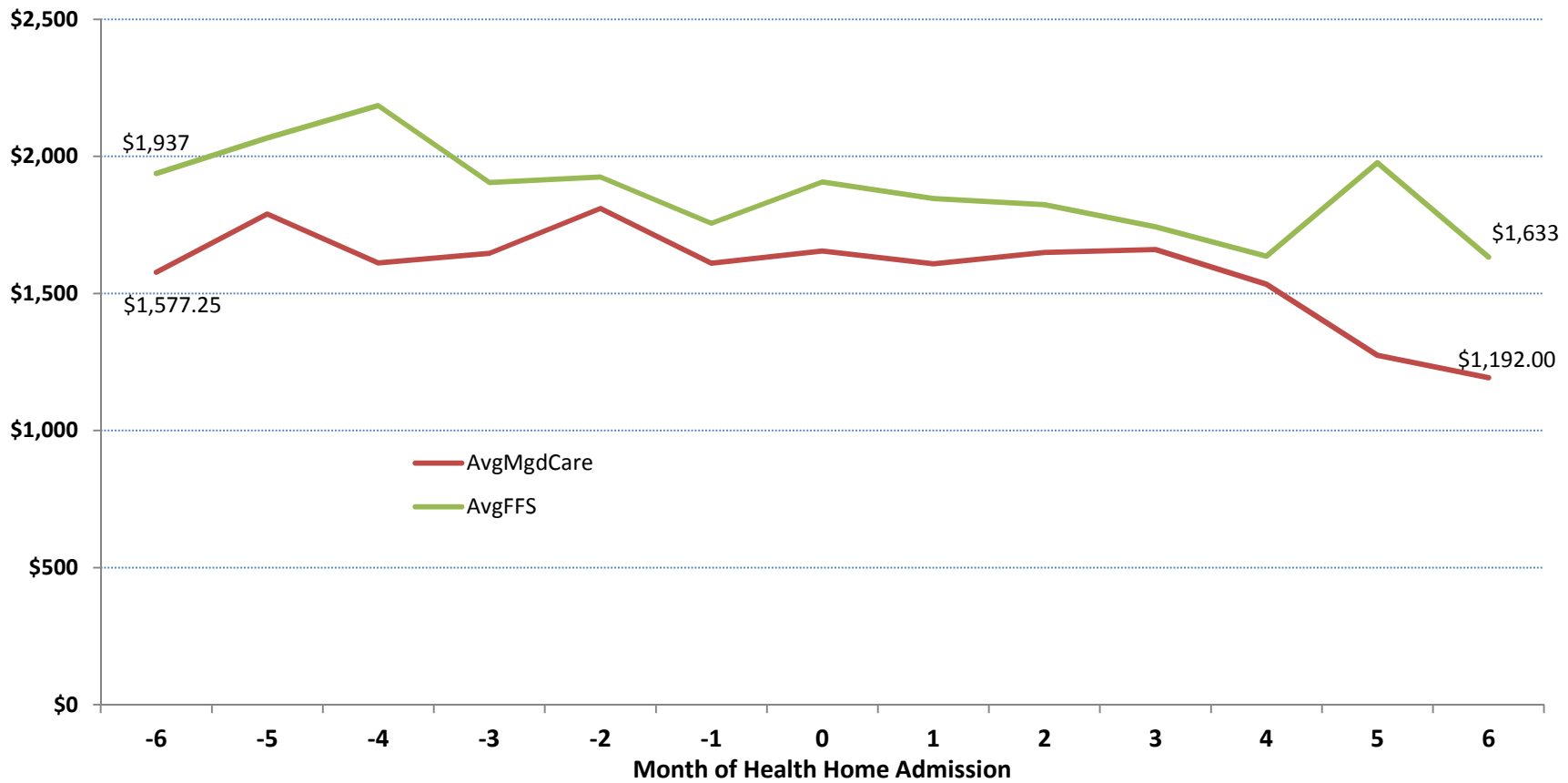


Children with Asthma Enrolled in Missouri Health Home - Average Monthly Costs



Children with Asthma Enrolled in Missouri Health Home – FFS vs. Managed Care

Average Monthly Costs





Goals of the Health Home Initiative

- By implementing the health home program we hope to demonstrate
 - Improved patient outcomes and health status
 - Improved coordination of primary care and behavioral health
 - Improved coordination and transitions of care
 - Reduced inappropriate ED utilization
 - Reduced avoidable in-patient utilization
 - Enhanced use of community resources and reduction in non-medically required residential stays
 - Reduction in health care costs



Goals of the Health Home Initiative

- Implement and evaluate the health home model as a way to achieve accessible, high quality primary health care and behavioral health care;
- Demonstrate cost-effectiveness in order to justify and support the sustainability and spread of the model; and
- Support primary care and behavioral care practice sites by increasing available resources and improving care coordination to result in improved quality of clinician work life and patient outcomes.



Health Home Asthma Success Stories

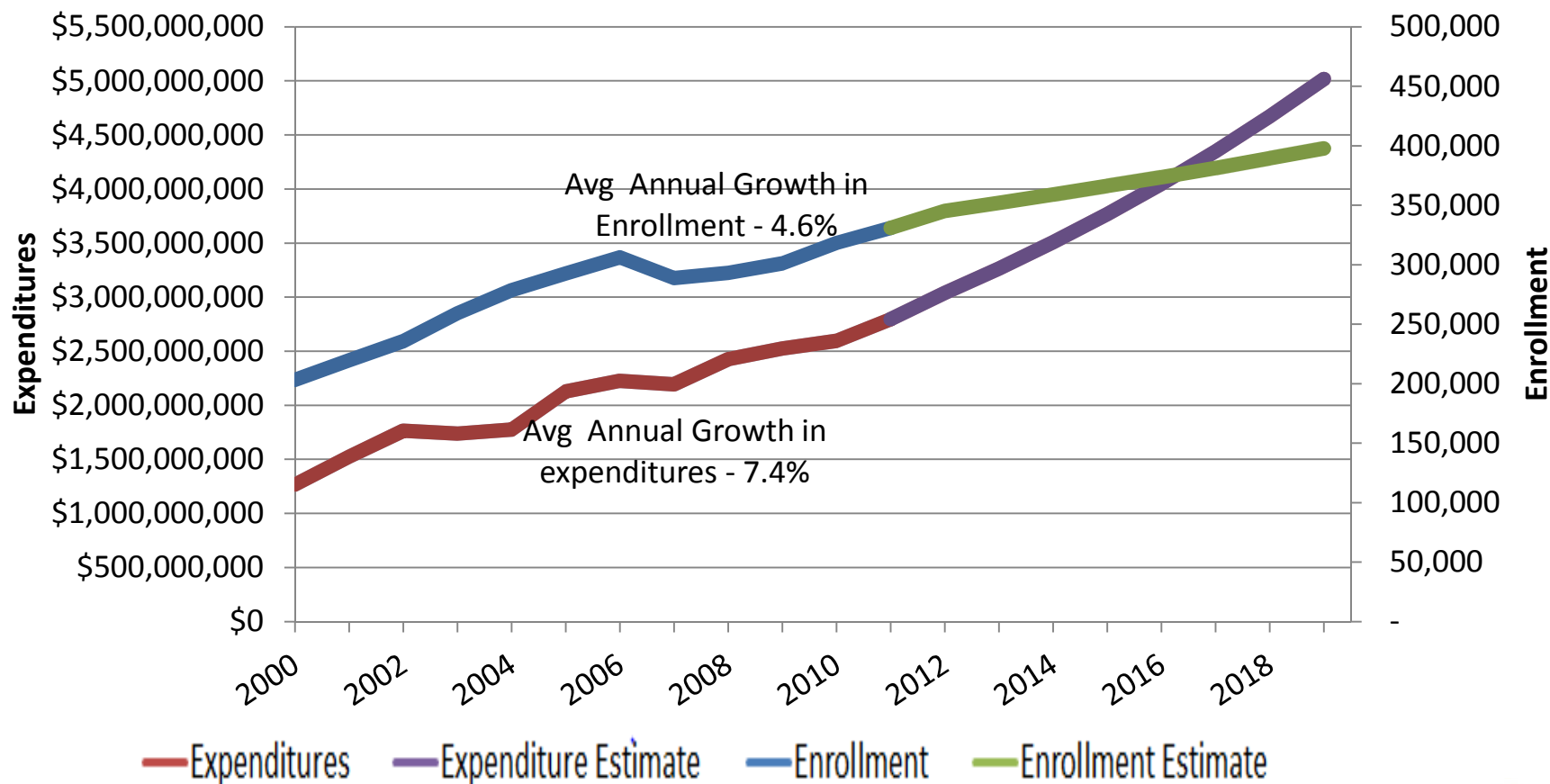


Statewide Managed Care through
Whole Person Health Homes

Susan Mosier, MD, MBA, FACS
Kansas Director of Medicaid Services
June 5, 2013

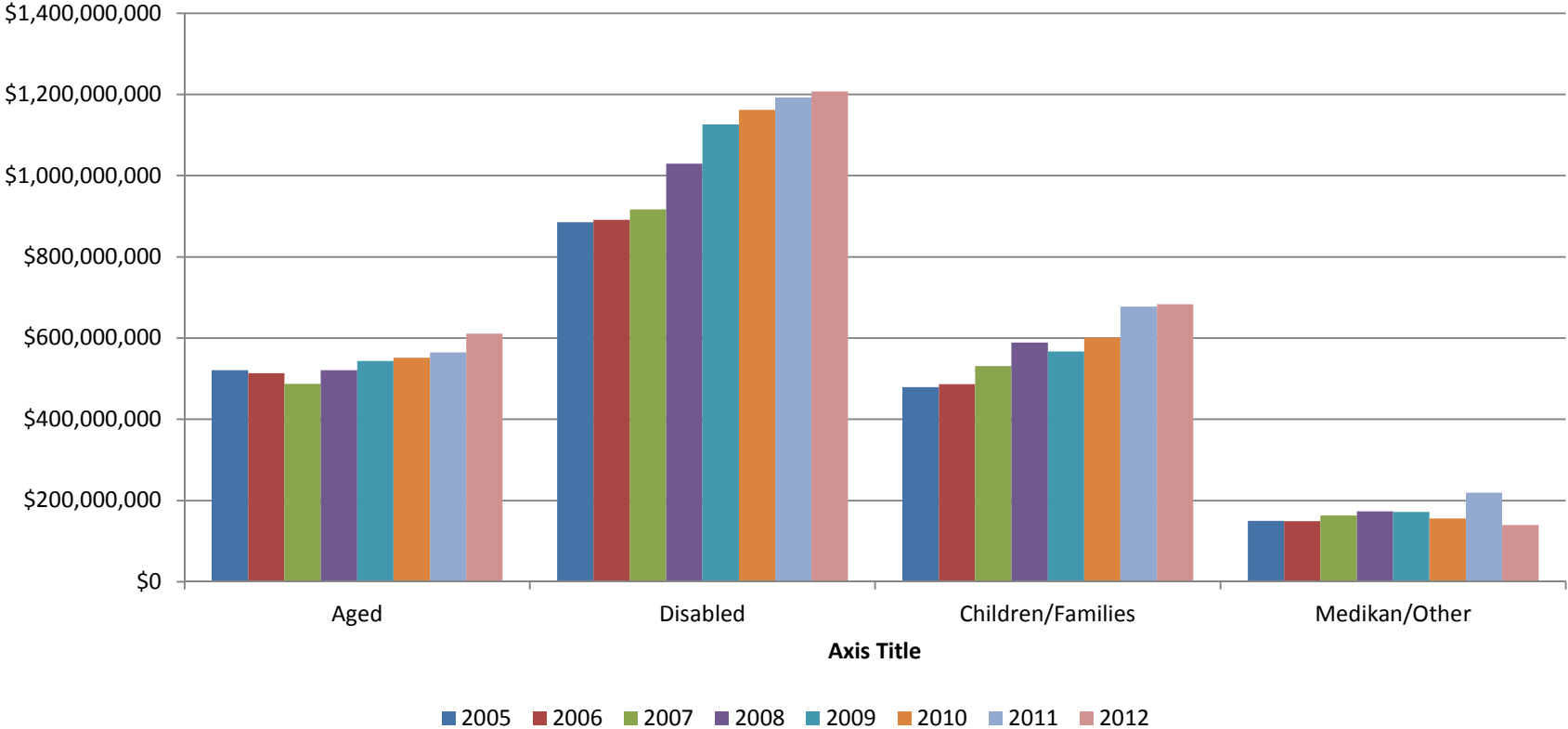
Sustained Medicaid Growth

Total Medicaid – without expansion



Growth by Population

Population Expenditures 2005-2012



Medicaid Components

SFY 2012 , in \$millions	Children/ Families	Individuals with Disabilities	Aged	MediKan/ Other	TOTAL
Physical Health	630	469	107	77	1283
Behavioral Health	46	126	15	48	235
Substance Abuse	8	7	0	4	19
Nursing Facilities	0	121	375	1	497
Home and Community Based Services	0	475	115	9	599
TOTAL	684	1198	612	139	2633

1115 Waiver for KanCare

- Move nearly all Medicaid populations into managed care
- Cover nearly all Medicaid services through managed care, including long-term services and supports
- Establish safety net care pools for hospitals

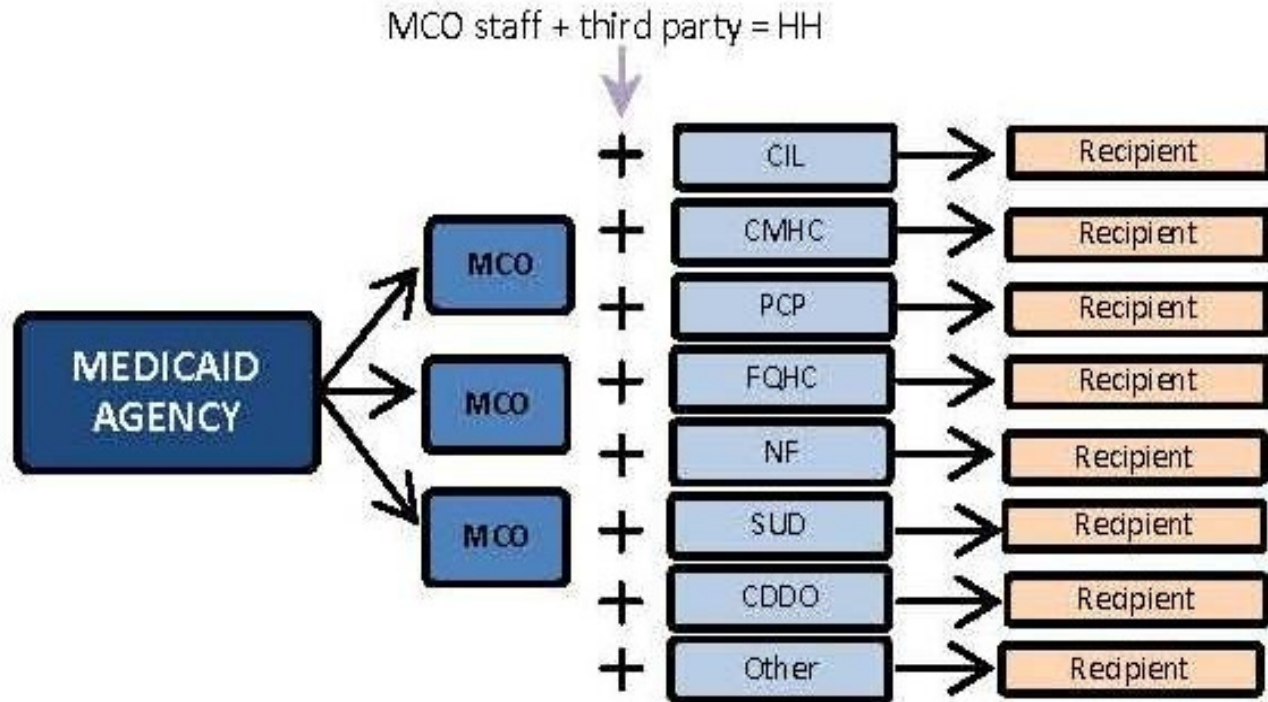
Health Homes in KanCare

- Integrate and coordinate care for the whole person
- For people with chronic conditions
- Can include medical homes
- Health homes do not replace acute care services

Six Core Services

- Comprehensive care management
- Care coordination and health promotion
- Comprehensive transitional care
- Patient and family support
- Referral to community and social support services
- Use of HIT to link services

KanCare Health Home Model



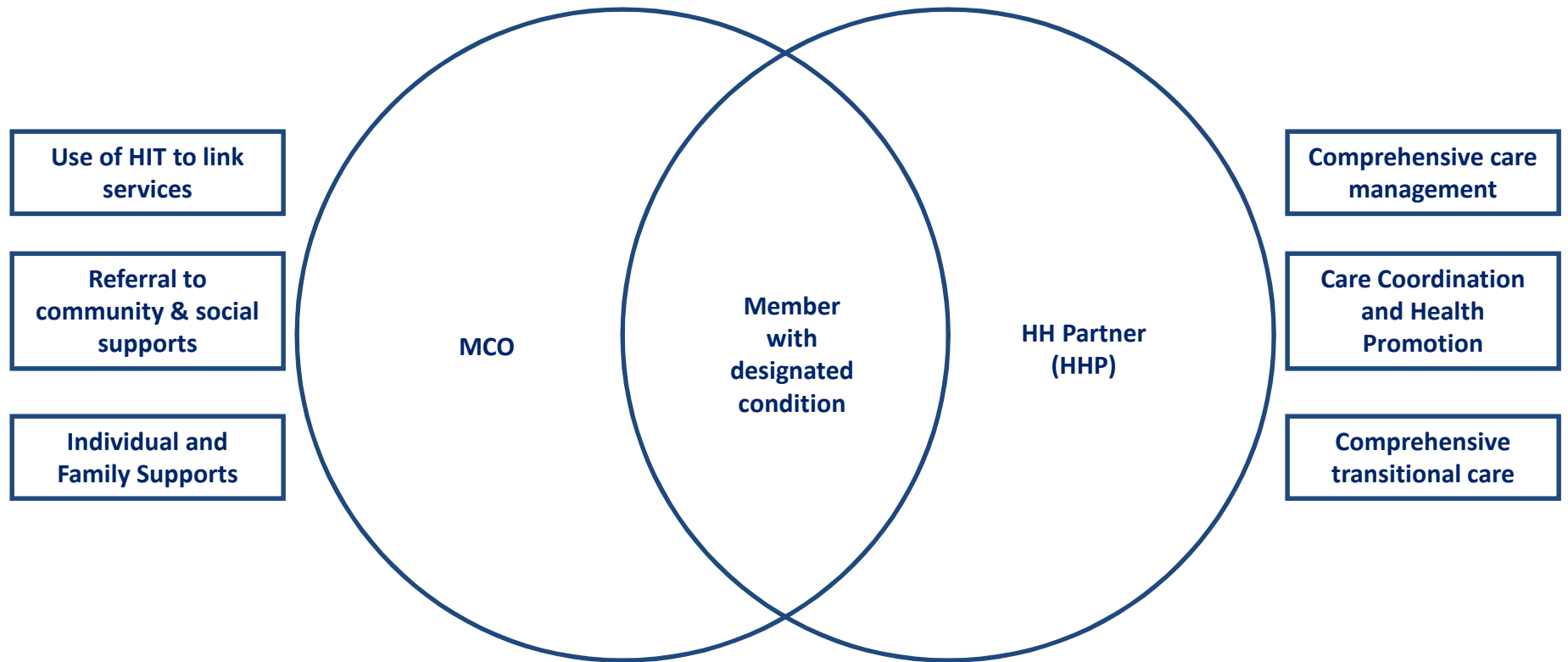
KanCare Health Home Model

- A partnership between the managed care organization (MCO) and another entity, a Health Home Partner (HHP)
- Offers flexibility for providing health home services within a fully capitated, risk-based managed care delivery system

KanCare Health Home Model

- Flexibility is critical since Kansas is a largely rural state and familiar community providers are important
- Health home beneficiaries likely have experience with, and preferences for, different types of Health Home Partners

KanCare Service Structure



Partnering to Provide Services

- Some health home services provided by the MCOs and some by the Health Home Partner (HHP)
- Some services may be jointly provided by the two
- Division of services, as well as payment between the MCO and the HHP, will be spelled out in contract

Health Homes Ensure

- Critical information is shared
- The beneficiary has the tools needed to help manage his/her chronic condition(s)
- Necessary screenings and tests occur on a timely basis
- Avoidable ER visits and hospital stays are reduced
- Community and social supports are in place

Bobby has Asthma

Bobby is 8
years old

Bobby's
asthma has
not been well-
controlled

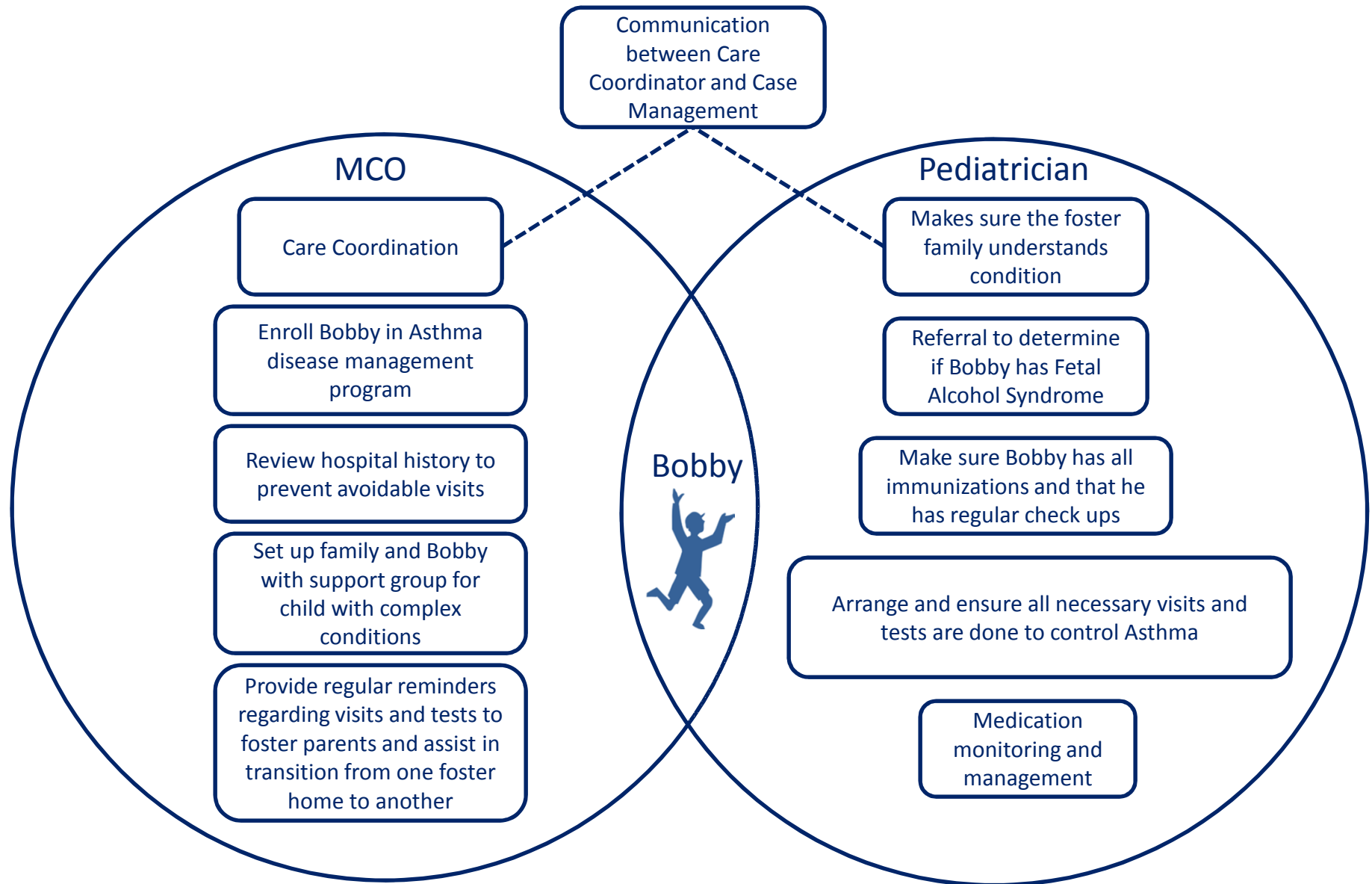
Bobby is in Foster Care
and has moved to several
different families in the
past several years



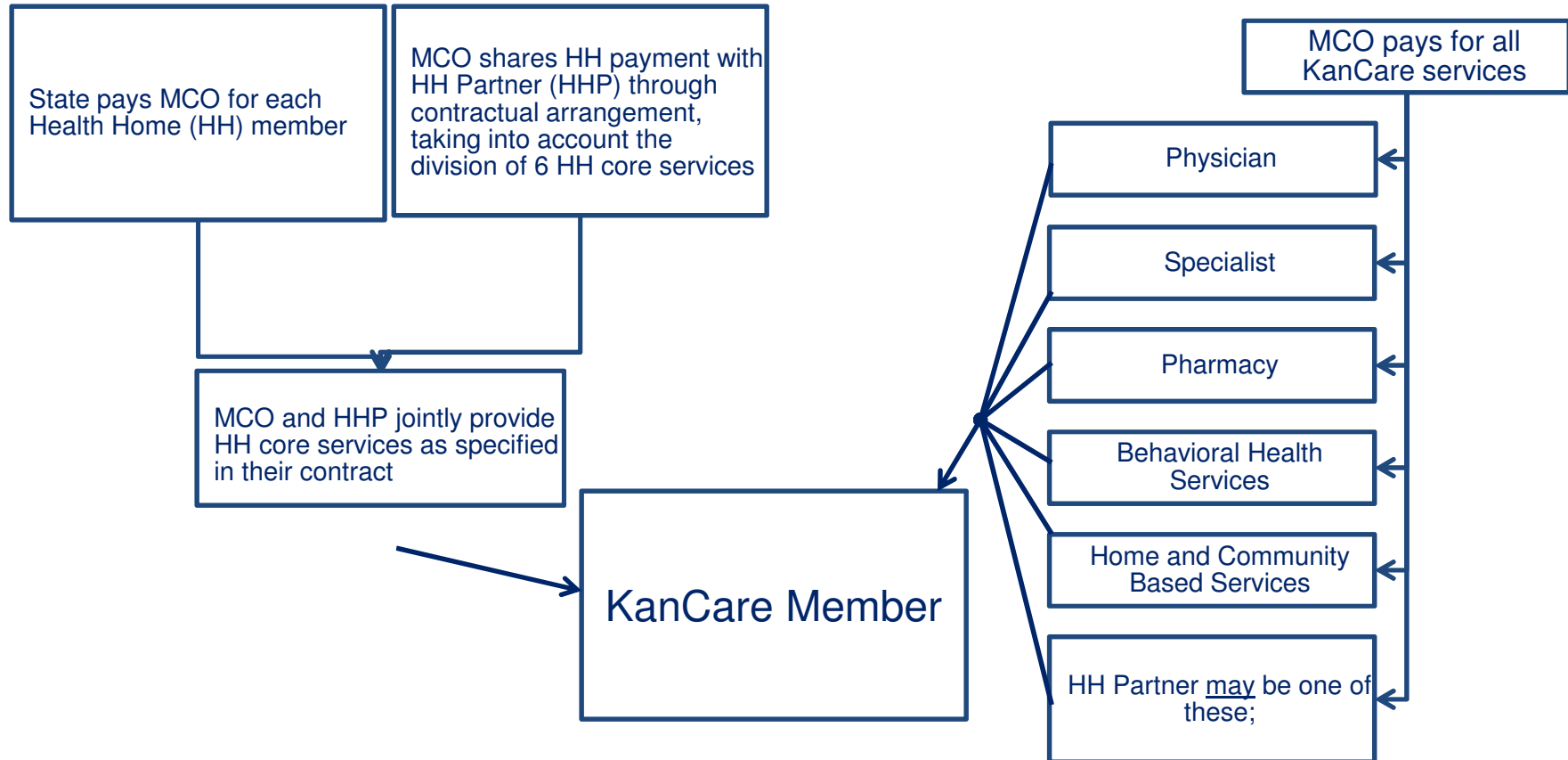
Bobby has been
admitted to the hospital
several times for asthma
exacerbations

Bobby
possibly has
Fetal Alcohol
Syndrome

How will a Health Home help?



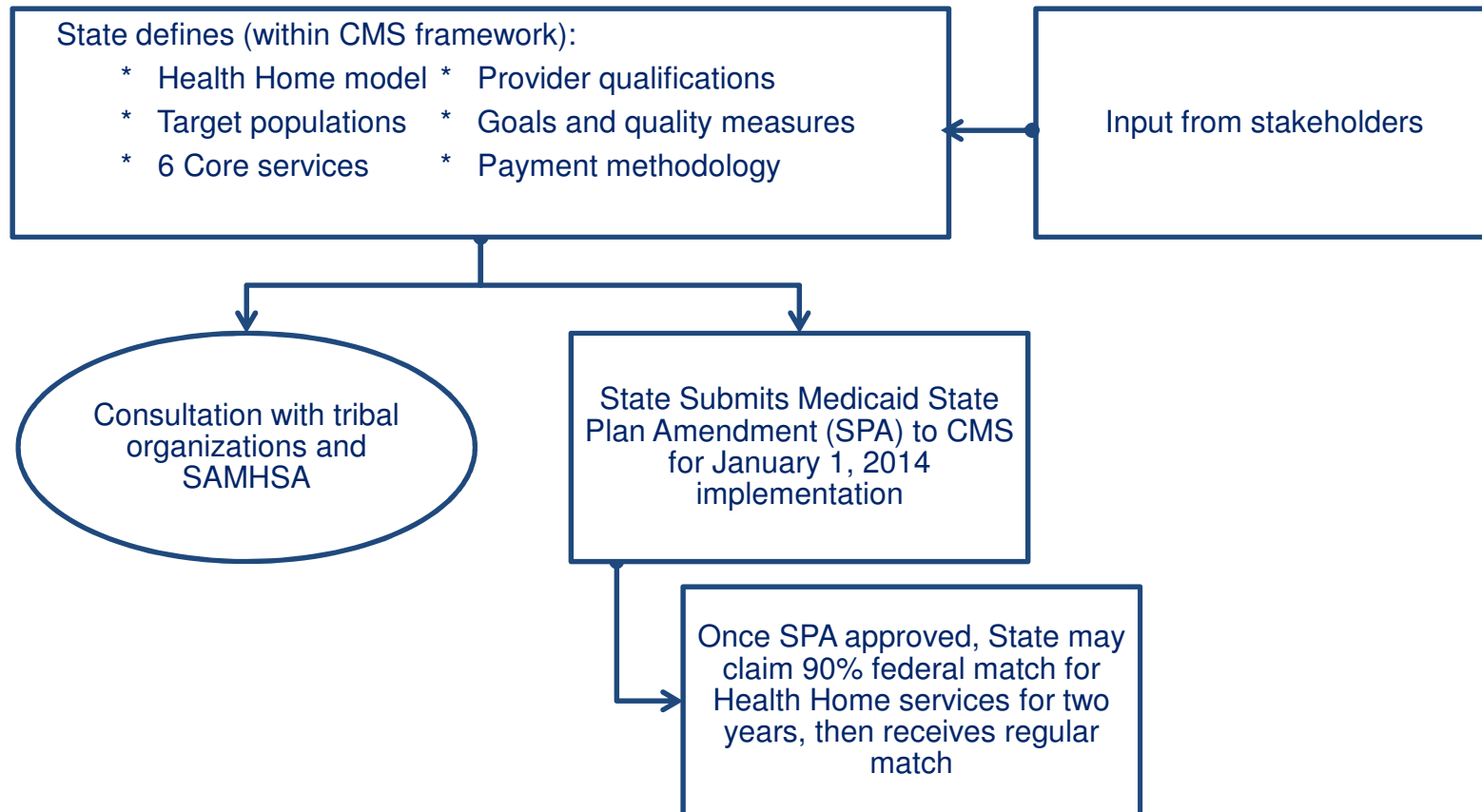
Payment Structure



Project Structure

- Project team of state staff, university and actuary partners, with managed care organization (MCO) representatives
- Technical assistance partner – Center for Health Care Strategies (CHCS)
- Health Homes Focus Group – 70+ stakeholders who provide advice, feedback and input

Process for Federal Approval



Questions?



www.kancare.ks.gov