

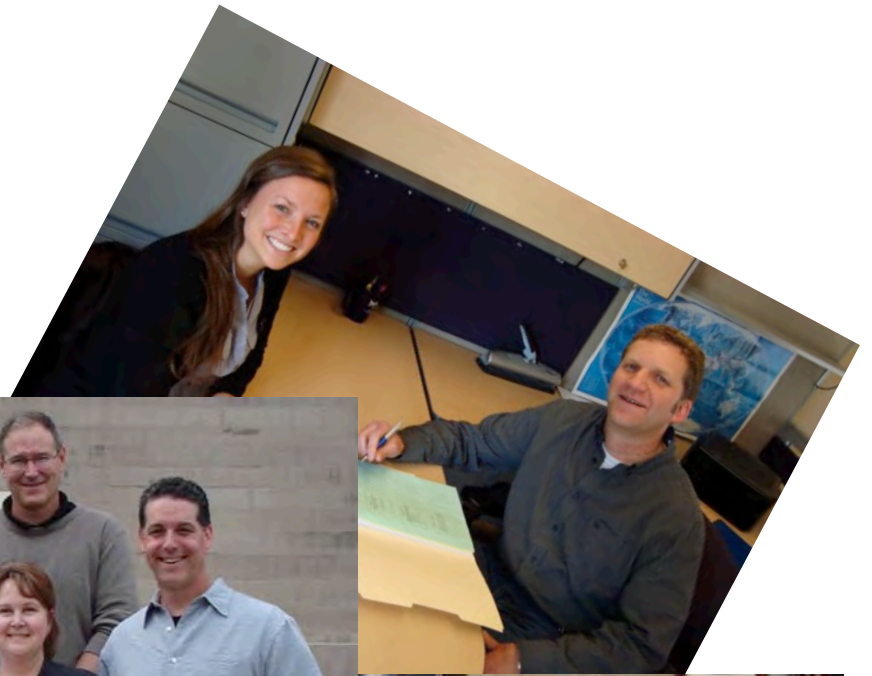
Michigan Department of Community Health, Asthma Prevention and Control Program

JOHN DOWLING
**MICHIGAN ASTHMA PREVENTION &
CONTROL PROGRAM**



ATLANTA



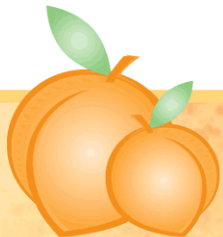


ATLANTA

CHEST 2012 | 

Program at a Glance

- **Location:** Lansing, Michigan
- **Type of Program:** Community Asthma Coalition
- **Service Area:** Statewide, focusing on communities with the highest asthma burden
- **Population Served:** Low income, urban, suburban and rural communities throughout the state
- **Results:** 24% ↓ asthma mortality; 28% ↓ in pediatric hospitalizations; 41% ↓ in asthma hospitalizations for children enrolled in Michigan Medicaid programs

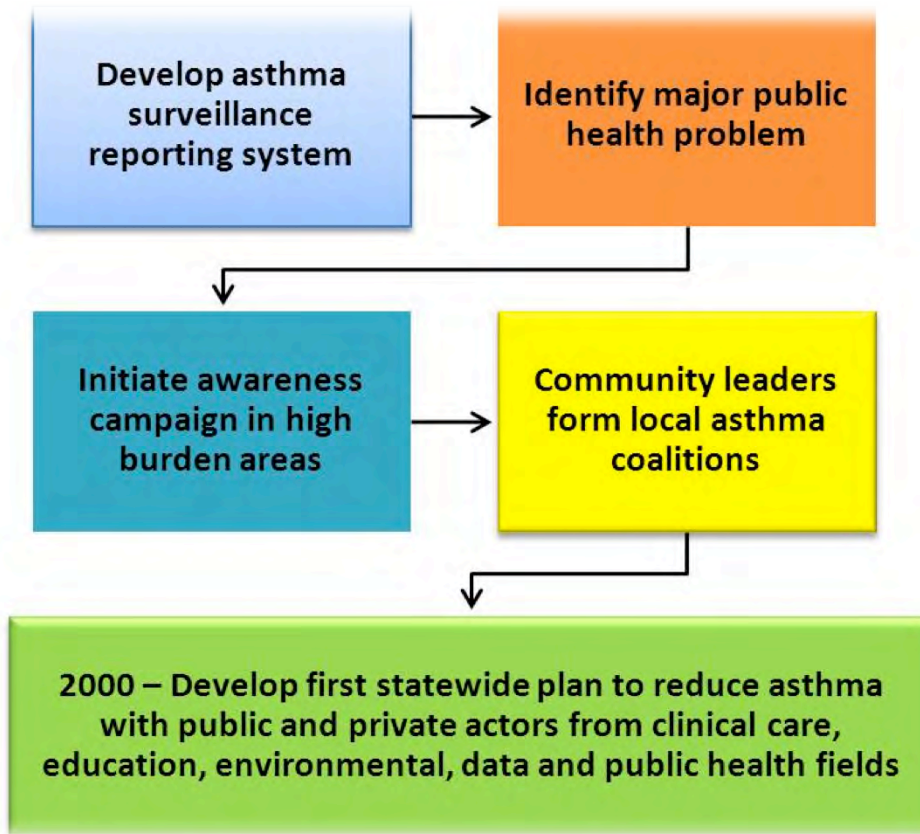


ATLANTA

CHEST
2012 | 

Building the System

Let Data Guide Program Planning, Design and Implementation



High Performing Collaborations:

Partnered with University of Michigan School of Public Health to develop multi-media presentation to educate participants on asthma triggers in the home.

Today: Third iteration of 2011-2014 Strategic Plan uses collaborative partnerships to achieve success.

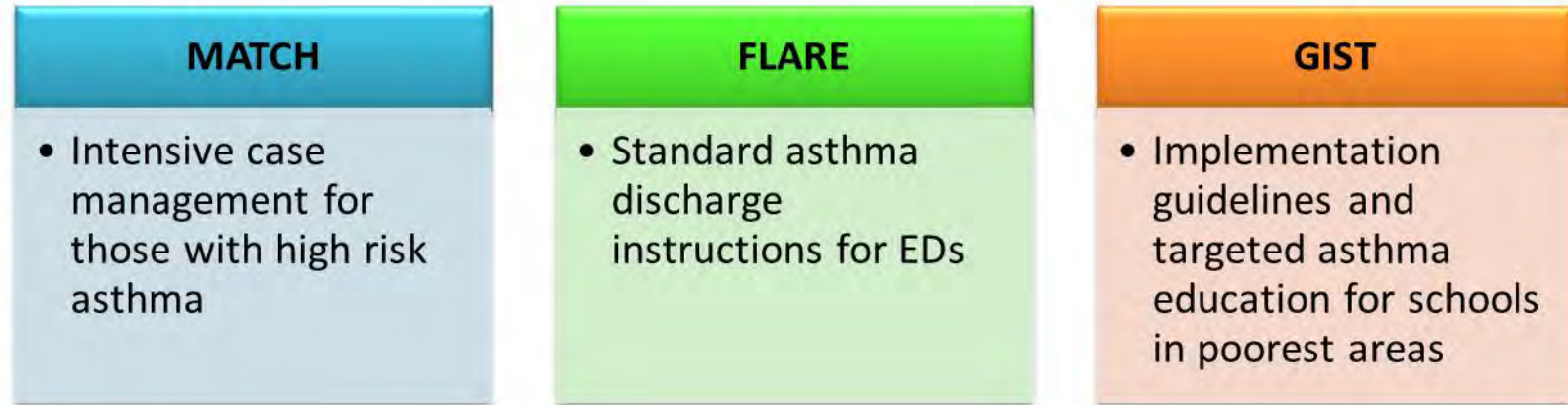


ATLANTA

CHEST
2012 | 

Evaluating the System

- Evaluate Program Implementation
- Utilize partnerships, contract language, funding, application prioritization
- Establish sustainable programs to meet the needs of asthma community



- **Results:** 24% ↓ MI asthma mortality ratio (2000-2007); 28% ↓ pediatric asthma hospitalization rates (2000-2009); 41% ↓ asthma hospitalization for children in MI Medicaid programs (2005-2009).



ATLANTA

CHEST
2012 

Sustaining the System

Secure and maintain diverse funding streams:

- National Asthma Control Initiative
- Agency for Health Care Research & Quality
- Environmental Protection Agency
- U.S. Department of Housing and Urban Development

Utilize integrated partnerships to make policy recommendations and promote community initiatives:

- Healthy School Action Tool
- Managing Asthma Through Case Management in Homes
- Diabetes, arthritis, cancer, disabilities, tobacco and injury prevention, Cardiovascular Health, Nutrition , Physical Activity Programs



ATLANTA

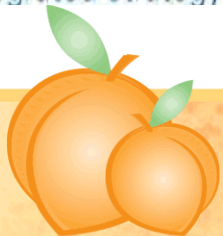
CHEST
2012 | 

Sustaining the System



nonprofit
IMPACT
integrated strategy ■ real results

Shelli Bischoff, www.nonprofitimpact.com



ATLANTA

CHEST
2012 | 

For more information...

John Dowling, MA, LPC

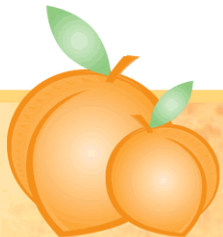
Lead Asthma Coordinator

Michigan Asthma Prevention & Control Program

Michigan Dept. of Community Health

(P): 517-335-9713

E-mail: dowlingj@michigan.gov



ATLANTA

CHEST
2012 